

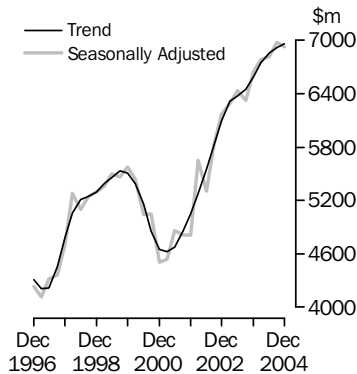
ENGINEERING CONSTRUCTION ACTIVITY

AUSTRALIA

EMBARGO: 11.30AM (CANBERRA TIME) TUES 19 APR 2005

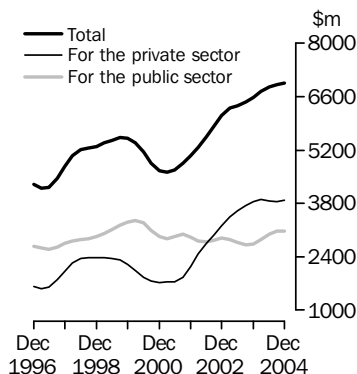
Value of work done

Total engineering
Volume terms



Value of work done

Volume terms
Trend estimates



KEY FIGURES

	Dec qtr 04	Sep qtr 04 to Dec qtr 04	Dec qtr 03 to Dec qtr 04
	\$m	% change	% change

TREND ESTIMATES VOLUME TERMS (a)

Value of work done

For the private sector	3 878.4	0.7	0.7
For the public sector(b)	3 068.6	0.1	12.2
Total engineering construction	6 957.6	0.6	5.6

SEASONALLY ADJUSTED VOLUME TERMS (a)

Value of work done

For the private sector	3 966.2	5.3	1.3
For the public sector(b)	2 961.6	-7.8	8.7
Total engineering construction	6 927.8	-0.7	4.3

(a) Chain volume measures, reference year 2002-03.

(b) Includes work done by the private sector for the public sector and work done by the public sector.

KEY POINTS

VALUE OF CONSTRUCTION WORK DONE, VOLUME TERMS

TREND ESTIMATES

- The trend estimate for the value of total engineering construction work done rose 0.6% in the December 2004 quarter. This is the fifteenth consecutive quarterly rise.
- The trend estimate for the value of work done for the private sector rose 0.7% in the December 2004 quarter. Work done for the public sector rose 0.1% in the December quarter.

SEASONALLY ADJUSTED ESTIMATES

- The seasonally adjusted estimate for the value of total engineering construction work done in the December 2004 quarter fell 0.7%, to \$6,927.8m after four quarters of growth.
- The seasonally adjusted estimate for the value of work done for the private sector rose 5.3%, to \$3,966.2m, in the December 2004 quarter after two consecutive quarters of decline. The value of work done for the public sector fell 7.8% to \$2,961.6m.

ORIGINAL ESTIMATES

- The value of work done in the December 2004 quarter rose 4.2%, to \$7,112.8m. This is the second highest level reported after the record high of \$7,217.8m in June 2004.
- The value of work done for the private sector rose 5.9%, to \$4,126.5m in the December quarter 2004. Work done for the public sector rose 2.0%, to \$2,986.3m, following a 12.9% fall in the September 2004 quarter.

INQUIRIES

For further information about these and related statistics, contact the National Information and Referral Service on 1300 135 070 or Andrew Stidston on Adelaide (08) 8237 7668.

NOTES

FORTHCOMING ISSUES

<i>ISSUE (Quarter)</i>	<i>RELEASE DATE</i>
March 2005	15 July 2005
June 2005	12 October 2005

.....

CHANGES IN THIS ISSUE

There are no changes in this issue.

SIGNIFICANT REVISIONS THIS QUARTER

Compared with the current price original terms estimates published in the previous issue of this publication:

- The June quarter estimates have been revised downwards by \$4.8m for work commenced, \$7.4m for work done and have been revised upwards by \$1.1m for work yet to be done.
- The September quarter estimates have been revised upwards by \$66.6m for work commenced, \$23.2m for work done and \$2.8m for work yet to be done.

DATA NOTES

There are no notes about the data.

.....

ABBREVIATIONS

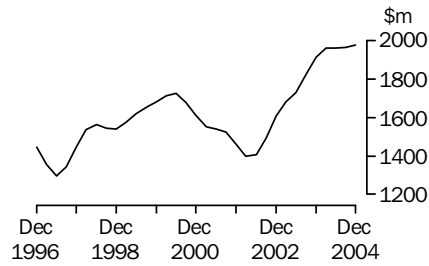
\$m	million dollars
ABN	Australian Business Number
ABS	Australian Bureau of Statistics
ACT	Australian Capital Territory
ANZSIC	Australian and New Zealand Standard Industrial Classification
ATO	Australian Taxation Office
Aust.	Australia
ECS	Engineering Construction Survey
NSW	New South Wales
NT	Northern Territory
qtr	quarter
Qld	Queensland
RSE	relative standard error
SA	South Australia
Tas.	Tasmania
TAU	type of activity unit
Vic.	Victoria
WA	Western Australia

Susan Linacre
Acting Australian Statistician

VALUE OF WORK DONE STATES AND TERRITORIES

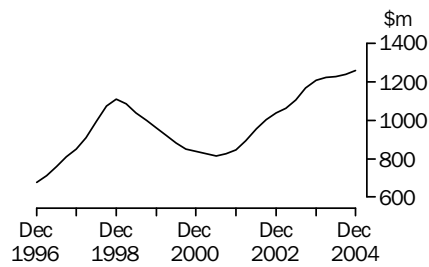
CHAIN VOLUME MEASURES—TREND ESTIMATES

NEW SOUTH WALES



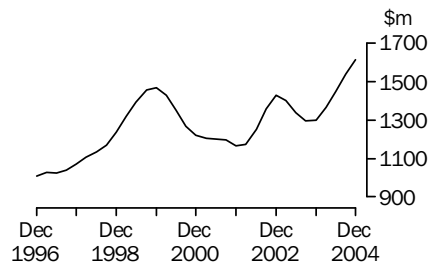
The trend estimate for the value of work done has increased for eleven consecutive quarters.

VICTORIA



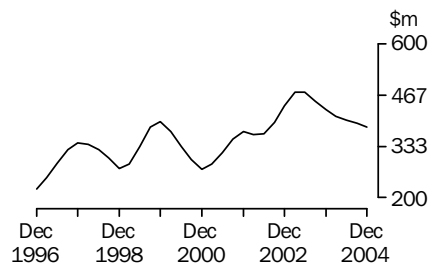
The trend estimate for the value of work done has grown consistently since the June quarter 2001.

QUEENSLAND



The trend estimate has shown growth over the past five quarters.

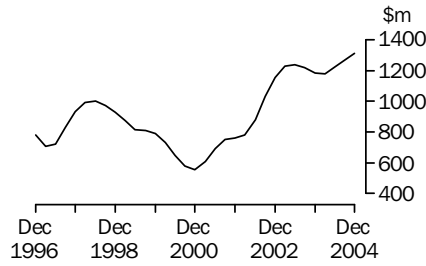
SOUTH AUSTRALIA



The trend estimate for work done has been in decline for the past six quarters.

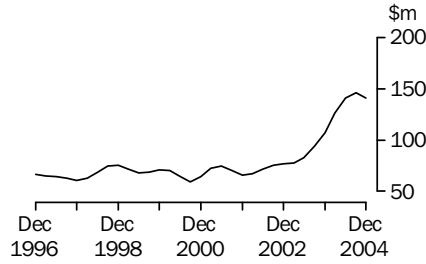
VALUE OF WORK DONE STATES AND TERRITORIES *continued*

WESTERN AUSTRALIA



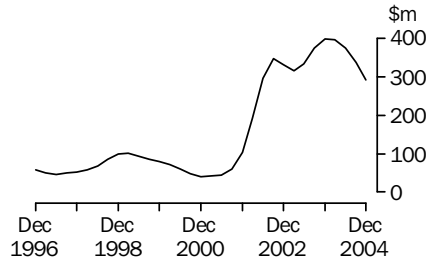
The trend estimate for the value of work done has increased for the last three quarters.

TASMANIA



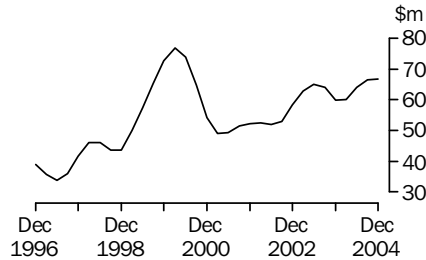
The trend estimate for work done has moved into decline after eleven quarters of growth.

NORTHERN TERRITORY



The trend estimate for the value of work done has declined for the past four quarters.

AUSTRALIAN CAPITAL TERRITORY



After a period of decline during 2003, the trend estimate for work done has shown an upward movement for the past four quarters.

LIST OF TABLES

page

TABLES

1	Value of work done, chain volume measures	6
2	Value of work done, chain volume measures, change from previous period	7
3	Value of work done, states and territories, chain volume measures	8
4	Value of work done, states and territories, chain volume measures, change from previous period	9
5	Value of work done	10
6	Value of work done, change from previous period	11
7	Value of work done, states and territories	12
8	Value of work done, states and territories, change from previous period	13
9	Activity, states and territories, original	14
10	Activity, states and territories, change from previous period, original	15
11	Activity, by type, original	16
12	Work commenced by the private sector, by type, original	18
13	Work done by the private sector, by type, original	20
14	Work yet to be done by the private sector, by type, original	22
15	Activity by the public sector, by type, original	24
16	Activity for the public sector, by type, original	26
17	Activity, by type, New South Wales, original	28
18	Activity, by type, Victoria, original	29
19	Activity, by type, Queensland, original	30
20	Activity, by type, South Australia, original	31
21	Activity, by type, Western Australia, original	32
22	Activity, by type, Tasmania, original	33
23	Activity, by type, Northern Territory, original	34
24	Activity, by type, Australian Capital Territory, original	35
25	Value of work done by the private sector, states and territories, original	36
26	Value of work done by the public sector, states and territories, original	37
27	Value of work done for the public sector, states and territories, original	38
28	Relative standard errors, Australia, by sector	39
29	Relative standard errors, states and territories, by type of work	40

VALUE OF WORK DONE, Chain volume measures(a)

BY THE PRIVATE SECTOR

Period	For the private sector	For the public sector	Total	By the public sector	Total for the public sector(b)	Total
	\$m	\$m	\$m	\$m	\$m	\$m
ORIGINAL						
2001-02	9 164.9	3 953.3	13 116.8	7 447.3	11 401.5	20 577.0
2002-03	13 283.0	4 043.8	17 326.8	7 402.9	11 446.7	24 729.7
2003-04	15 345.6	3 997.5	19 343.1	7 213.9	11 211.4	26 557.0
2003						
September	3 704.4	909.8	4 614.1	1 528.5	2 438.2	6 142.6
December	4 075.1	926.4	5 001.5	1 816.5	2 743.0	6 818.0
2004						
March	3 712.3	991.1	4 703.4	1 675.1	2 666.2	6 378.5
June	3 853.8	1 170.2	5 024.0	2 193.8	3 364.0	7 217.8
September	3 894.9	1 144.4	5 039.3	1 784.4	2 928.8	6 823.7
December	4 126.5	1 192.5	5 319.1	1 793.8	2 986.3	7 112.8

SEASONALLY ADJUSTED

2003						
September	3 644.4	935.3	4 579.7	1 745.6	2 680.9	6 325.3
December	3 915.8	912.4	4 828.2	1 813.0	2 725.5	6 641.2
2004						
March	3 928.4	1 030.8	4 959.2	1 818.7	2 849.5	6 777.9
June	3 857.0	1 119.0	4 976.0	1 836.6	2 955.5	6 812.5
September	3 765.0	1 176.3	4 941.3	2 034.7	3 211.0	6 976.0
December	3 966.2	1 175.2	5 141.4	1 786.4	2 961.6	6 927.8

TREND

2003						
September	3 736.1	927.2	4 663.3	1 792.1	2 719.4	6 455.0
December	3 851.7	949.9	4 801.6	1 785.6	2 735.5	6 587.2
2004						
March	3 893.8	1 019.7	4 913.5	1 830.8	2 850.6	6 744.4
June	3 868.2	1 105.7	4 972.7	1 886.2	2 992.9	6 858.4
September	3 852.2	1 163.4	5 015.0	1 903.3	3 067.0	6 918.1
December	3 878.4	1 183.5	5 068.1	1 888.2	3 068.6	6 957.6

(a) Reference year for chain volume measures is 2002-03. See paragraphs 24-27 of the Explanatory Notes.

(b) Includes work done by the private sector for the public sector and work done by the public sector.

VALUE OF WORK DONE, Chain volume measures(a)—Change from previous period

 BY THE PRIVATE SECTOR

<i>Period</i>	<i>For the private sector</i>	<i>For the public sector</i>	<i>Total</i>	<i>By the public sector</i>	<i>Total for the public sector(b)</i>	<i>Total</i>
	%	%	%	%	%	%
ORIGINAL						
2001-02	31.0	-11.3	14.5	-0.4	-4.4	8.6
2002-03	44.9	2.3	32.1	-0.6	0.4	20.2
2003-04	15.5	-1.1	11.6	-2.6	-2.1	7.4
2003						
September	2.9	-10.7	-0.1	-30.8	-24.5	-10.1
December	10.0	1.8	8.4	18.8	12.5	11.0
2004						
March	-8.9	7.0	-6.0	-7.8	-2.8	-6.4
June	3.8	18.1	6.8	31.0	26.2	13.2
September	1.1	-2.2	0.3	-18.7	-12.9	-5.5
December	5.9	4.2	5.6	0.5	2.0	4.2

 SEASONALLY ADJUSTED

2003						
September	0.9	-3.9	-0.1	-5.5	-5.0	-1.7
December	7.4	-2.4	5.4	3.9	1.7	5.0
2004						
March	0.3	13.0	2.7	0.3	4.6	2.1
June	-1.8	8.6	0.3	1.0	3.7	0.5
September	-2.4	5.1	-0.7	10.8	8.6	2.4
December	5.3	-0.1	4.0	-12.2	-7.8	-0.7

 TREND

2003						
September	3.7	-4.1	2.0	-0.6	-1.8	1.3
December	3.1	2.5	3.0	-0.4	0.6	2.0
2004						
March	1.1	7.3	2.3	2.5	4.2	2.4
June	-0.7	8.4	1.2	3.0	5.0	1.7
September	-0.4	5.2	0.8	0.9	2.5	0.9
December	0.7	1.7	1.1	-0.8	0.1	0.6

(a) Reference year for chain volume measures is 2002-03. See paragraphs 24-27 of the Explanatory Notes.

(b) Includes work done by the private sector for the public sector and work done by the public sector.

VALUE OF WORK DONE, States and territories—Chain volume measures(a)

<i>Period</i>	<i>NSW</i>	<i>Vic.</i>	<i>Qld</i>	<i>SA</i>	<i>WA</i>	<i>Tas.</i>	<i>NT</i>	<i>ACT</i>	<i>Aust.</i>
	\$m	\$m	\$m	\$m	\$m	\$m	\$m	\$m	\$m
ORIGINAL									
2001-02	5 762.7	3 478.2	4 755.5	1 451.9	3 200.0	467.8	1 256.0	205.2	20 577.0
2002-03	6 483.7	4 244.3	5 558.8	1 766.4	4 735.3	364.0	1 331.6	244.7	24 729.7
2003-04	7 629.7	4 831.1	5 358.7	1 712.0	4 741.0	465.9	1 580.6	238.0	26 557.0
2003									
September	1 746.8	1 080.5	1 209.7	433.3	1 139.0	74.3	406.8	52.3	6 142.6
December	1 911.0	1 217.3	1 446.1	429.7	1 220.0	113.9	419.6	60.4	6 818.0
2004									
March	1 921.0	1 225.5	1 190.1	385.3	1 115.4	121.1	361.3	58.8	6 378.5
June	2 050.9	1 307.8	1 512.7	463.7	1 266.6	156.6	392.8	66.6	7 217.8
September	1 946.3	1 139.2	1 582.9	358.4	1 272.4	130.1	323.8	70.6	6 823.7
December	1 987.8	1 275.1	1 654.4	372.9	1 339.7	118.1	309.6	55.3	7 112.8
SEASONALLY ADJUSTED									
2003									
September	1 839.2	1 158.6	1 220.5	479.3	1 180.5	96.1	419.1	58.4	6 325.3
December	1 888.4	1 221.7	1 405.4	421.1	1 183.4	113.0	366.2	63.7	6 641.2
2004									
March	2 073.4	1 228.8	1 300.0	393.5	1 195.4	114.8	398.8	58.6	6 777.9
June	1 828.7	1 222.1	1 432.8	418.1	1 181.6	142.0	396.5	57.3	6 812.5
September	2 033.5	1 224.8	1 591.7	398.9	1 312.3	169.4	337.2	79.2	6 976.0
December	1 979.0	1 279.1	1 602.4	368.6	1 304.6	118.2	271.9	59.0	6 927.8
TREND									
2003									
September	1 819.9	1 168.3	1 294.2	451.2	1 221.8	93.8	375.3	64.1	6 455.0
December	1 913.0	1 209.8	1 299.4	430.2	1 185.3	107.0	399.2	59.8	6 587.2
2004									
March	1 960.8	1 223.6	1 364.9	412.2	1 180.8	126.4	397.2	60.2	6 744.4
June	1 961.4	1 228.7	1 448.8	402.0	1 223.6	141.3	375.5	64.0	6 858.4
September	1 967.6	1 239.8	1 538.9	394.4	1 270.6	146.2	338.6	66.5	6 918.1
December	1 977.3	1 258.3	1 615.9	383.3	1 311.6	141.2	293.0	66.9	6 957.6

(a) Reference year for chain volume measures is 2002-03. See paragraphs 24-27 of the Explanatory Notes.

VALUE OF WORK DONE, States and territories—Chain volume measures(a)—Change from previous period

<i>Period</i>	<i>NSW</i>	<i>Vic.</i>	<i>Qld</i>	<i>SA</i>	<i>WA</i>	<i>Tas.</i>	<i>NT</i>	<i>ACT</i>	<i>Aust.</i>
	%	%	%	%	%	%	%	%	%
ORIGINAL									
2001-02	-10.6	3.6	-4.1	23.3	36.1	69.2	616.5	-5.4	8.6
2002-03	12.5	22.0	16.9	21.7	48.0	-22.2	6.0	19.3	20.2
2003-04	17.7	13.8	-3.6	-3.1	0.1	28.0	18.7	-2.7	7.4
2003									
September	-5.7	-10.0	-12.1	-12.8	-18.7	-18.2	23.5	-35.5	-10.1
December	9.4	12.7	19.5	-0.8	7.1	53.4	3.2	15.5	11.0
2004									
March	0.5	0.7	-17.7	-10.3	-8.6	6.3	-13.9	-2.6	-6.4
June	6.8	6.7	27.1	20.4	13.6	29.4	8.7	13.2	13.2
September	-5.1	-12.9	4.6	-22.7	0.5	-16.9	-17.6	6.1	-5.5
December	2.1	11.9	4.5	4.0	5.3	-9.2	-4.4	-21.8	4.2
SEASONALLY ADJUSTED									
2003									
September	10.7	3.2	-5.8	6.1	-9.8	23.7	24.3	-17.5	-1.7
December	2.7	5.4	15.2	-12.1	0.2	17.7	-12.6	9.1	5.0
2004									
March	9.8	0.6	-7.5	-6.6	1.0	1.5	8.9	-8.0	2.1
June	-11.8	-0.5	10.2	6.3	-1.2	23.8	-0.6	-2.3	0.5
September	11.2	0.2	11.1	-4.6	11.1	19.3	-15.0	38.3	2.4
December	-2.7	4.4	0.7	-7.6	-0.6	-30.2	-19.3	-25.6	-0.7
TREND									
2003									
September	5.2	5.5	-3.3	-4.9	-1.5	12.9	12.5	-1.3	1.3
December	5.1	3.6	0.4	-4.7	-3.0	14.1	6.4	-6.7	2.0
2004									
March	2.5	1.1	5.0	-4.2	-0.4	18.1	-0.5	0.6	2.4
June	—	0.4	6.1	-2.5	3.6	11.8	-5.5	6.3	1.7
September	0.3	0.9	6.2	-1.9	3.8	3.5	-9.8	3.9	0.9
December	0.5	1.5	5.0	-2.8	3.2	-3.4	-13.5	0.6	0.6

— nil or rounded to zero (including null cells)

(a) Reference year for chain volume measures is 2002-03. See paragraph 24-27 of the Explanatory Notes.

VALUE OF WORK DONE

BY THE PRIVATE SECTOR

Period	For the private sector	For the public sector	Total	By the public sector	Total for the public sector(a)	Total
	\$m	\$m	\$m	\$m	\$m	\$m
ORIGINAL						
2001-02	8 899.0	3 831.7	12 730.7	7 300.6	11 132.3	20 031.3
2002-03	13 283.0	4 042.8	17 325.9	7 402.9	11 445.8	24 728.8
2003-04	15 837.1	4 141.1	19 978.1	7 428.8	11 569.9	27 407.0
2003						
September	3 766.8	928.4	4 695.1	1 547.7	2 476.1	6 242.8
December	4 166.9	953.5	5 120.4	1 858.0	2 811.5	6 978.4
2004						
March	3 836.4	1 033.1	4 869.5	1 733.8	2 766.9	6 603.3
June	4 067.0	1 226.2	5 293.1	2 289.2	3 515.4	7 582.4
September	4 154.5	1 213.5	5 368.0	1 880.0	3 093.5	7 248.0
December	4 444.4	1 278.6	5 723.0	1 911.5	3 190.0	7 634.4

SEASONALLY ADJUSTED

2003						
September	3 719.3	954.2	4 673.5	1 766.1	2 720.3	6 439.6
December	4 029.2	938.9	4 968.1	1 851.6	2 790.5	6 819.7
2004						
March	4 053.1	1 074.4	5 127.5	1 878.8	2 953.2	7 006.3
June	4 083.9	1 172.8	5 256.7	1 912.2	3 085.0	7 169.0
September	4 034.3	1 246.6	5 280.9	2 144.5	3 391.1	7 425.4
December	4 281.1	1 258.7	5 539.8	1 904.1	3 162.8	7 443.9

TREND

2003						
September	3 535.2	946.1	4 481.3	1 816.8	2 762.9	6 298.1
December	3 610.5	978.7	4 589.3	1 823.7	2 802.4	6 413.0
2004						
March	3 658.2	1 061.0	4 719.2	1 888.9	2 949.9	6 608.1
June	3 729.2	1 159.5	4 888.7	1 966.9	3 126.4	6 855.6
September	3 873.9	1 232.1	5 106.0	2 005.5	3 237.6	7 111.5
December	4 087.2	1 274.7	5 361.9	2 007.9	3 282.6	7 369.8

(a) Includes work done by the private sector for the public sector and work done by the public sector.

VALUE OF WORK DONE, Change from previous period

BY THE PRIVATE SECTOR

<i>Period</i>	<i>For the private sector</i>	<i>For the public sector</i>	<i>Total</i>	<i>By the public sector</i>	<i>Total for the public sector(a)</i>	<i>Total</i>
	%	%	%	%	%	%
ORIGINAL						
2001-02	33.2	-9.9	16.4	1.3	-2.9	10.4
2002-03	49.3	5.5	36.1	1.4	2.8	23.5
2003-04	19.2	2.4	15.3	0.3	1.1	10.8
2003						
September	3.2	-10.0	0.3	-30.6	-24.1	-9.7
December	10.6	2.7	9.1	20.0	13.5	11.8
2004						
March	-7.9	8.3	-4.9	-6.7	-1.6	-5.4
June	6.0	18.7	8.7	32.0	27.1	14.8
September	2.2	-1.0	1.4	-17.9	-12.0	-4.4
December	7.0	5.4	6.6	1.7	3.1	5.3

SEASONALLY ADJUSTED

2003						
September	1.4	-3.1	0.4	-5.3	-4.6	-1.2
December	8.3	-1.6	6.3	4.8	2.6	5.9
2004						
March	0.6	14.4	3.2	1.5	5.8	2.7
June	0.8	9.2	2.5	1.8	4.5	2.3
September	-1.2	6.3	0.5	12.1	9.9	3.6
December	6.1	1.0	4.9	-11.2	-6.7	0.2

TREND

2003						
September	2.3	-3.2	1.1	-0.1	-1.1	0.8
December	2.1	3.5	2.4	0.4	1.4	1.8
2004						
March	1.3	8.4	2.8	3.6	5.3	3.0
June	1.9	9.3	3.6	4.1	6.0	3.7
September	3.9	6.3	4.4	2.0	3.6	3.7
December	5.5	3.5	5.0	0.1	1.4	3.6

(a) Includes work done by the private sector for the public sector and work done by the public sector.

VALUE OF WORK DONE, States and territories

<i>Period</i>	<i>NSW</i>	<i>Vic.</i>	<i>Qld</i>	<i>SA</i>	<i>WA</i>	<i>Tas.</i>	<i>NT</i>	<i>ACT</i>	<i>Aust.</i>
	\$m	\$m	\$m	\$m	\$m	\$m	\$m	\$m	\$m
ORIGINAL									
2001-02	5 597.6	3 389.0	4 627.5	1 417.4	3 119.3	453.8	1 226.7	199.9	20 031.3
2002-03	6 483.7	4 244.3	5 558.8	1 766.4	4 735.3	364.0	1 331.6	244.7	24 728.8
2003-04	7 888.2	4 983.3	5 539.9	1 764.7	4 880.6	485.5	1 619.8	244.9	27 407.0
2003									
September	1 776.6	1 097.2	1 231.7	439.8	1 156.4	75.5	412.7	53.0	6 242.8
December	1 961.4	1 246.2	1 483.5	439.2	1 243.4	117.5	425.3	61.9	6 978.4
2004									
March	1 996.8	1 269.3	1 234.4	398.7	1 148.9	126.5	368.2	60.6	6 603.3
June	2 153.3	1 370.7	1 590.4	487.1	1 331.9	166.0	413.5	69.4	7 582.4
September	2 066.3	1 209.3	1 684.4	379.5	1 350.3	139.7	344.4	74.1	7 248.0
December	2 133.8	1 369.1	1 777.9	399.4	1 435.6	127.7	332.7	58.3	7 634.4
SEASONALLY ADJUSTED									
2003									
September	1 875.1	1 174.8	1 242.3	486.2	1 198.7	98.0	415.4	59.1	6 439.6
December	1 948.4	1 249.5	1 439.3	431.5	1 207.1	117.4	411.7	65.4	6 819.7
2004									
March	2 170.7	1 271.7	1 344.8	409.0	1 232.9	121.0	375.2	60.6	7 006.3
June	1 935.4	1 280.1	1 501.7	441.6	1 244.4	152.3	414.8	60.0	7 169.0
September	2 153.3	1 296.2	1 697.1	419.8	1 392.0	164.8	347.5	82.4	7 425.4
December	2 118.4	1 369.3	1 725.3	392.5	1 397.4	127.0	290.1	61.6	7 443.9
TREND									
2003									
September	1 858.9	1 186.0	1 318.1	457.9	1 238.6	88.0	114.6	64.9	6 298.1
December	1 977.2	1 238.6	1 331.7	441.6	1 211.3	87.2	88.4	61.3	6 413.0
2004									
March	2 049.7	1 265.7	1 412.7	428.6	1 221.2	85.4	67.3	62.4	6 608.1
June	2 068.8	1 286.1	1 519.5	422.9	1 283.1	92.8	87.4	66.6	6 855.6
September	2 090.4	1 312.8	1 637.4	417.2	1 348.8	108.0	145.2	69.4	7 111.5
December	2 111.4	1 347.3	1 757.9	405.0	1 410.2	124.0	226.8	70.5	7 369.8

VALUE OF WORK DONE, States and territories—Change from previous period

<i>Period</i>	<i>NSW</i>	<i>Vic.</i>	<i>Qld</i>	<i>SA</i>	<i>WA</i>	<i>Tas.</i>	<i>NT</i>	<i>ACT</i>	<i>Aust.</i>
	%	%	%	%	%	%	%	%	%
ORIGINAL									
2001-02	-9.1	5.4	-2.5	25.5	38.2	71.7	629.1	-3.9	10.4
2002-03	15.8	25.2	20.1	24.6	51.8	-19.8	8.5	22.4	23.5
2003-04	21.7	17.4	-0.3	-0.1	3.1	33.4	21.6	0.1	10.8
2003									
September	-5.3	-9.6	-11.7	-12.6	-18.4	-17.7	24.0	-35.3	-9.7
December	10.4	13.6	20.4	-0.1	7.5	55.6	3.1	16.8	11.8
2004									
March	1.8	1.9	-16.8	-9.2	-7.6	7.6	-13.4	-2.0	-5.4
June	7.8	8.0	28.8	22.2	15.9	31.3	12.3	14.5	14.8
September	-4.0	-11.8	5.9	-22.1	1.4	-15.9	-16.7	6.7	-4.4
December	3.3	13.2	5.5	5.3	6.3	-8.6	-3.4	-21.3	5.3
SEASONALLY ADJUSTED									
2003									
September	11.4	3.5	-5.6	6.8	-9.3	24.7	23.9	-16.9	-1.2
December	3.9	6.4	15.9	-11.3	0.7	19.7	-0.9	10.7	5.9
2004									
March	11.4	1.8	-6.6	-5.2	2.1	3.0	-8.9	-7.2	2.7
June	-10.8	0.7	11.7	8.0	0.9	25.9	10.5	-1.0	2.3
September	11.3	1.3	13.0	-5.0	11.9	8.3	-16.2	37.3	3.6
December	-1.6	5.6	1.7	-6.5	0.4	-23.0	-16.5	-25.2	0.2
TREND									
2003									
September	6.3	6.3	-2.7	-3.9	-0.9	4.5	-17.4	-0.2	0.8
December	6.4	4.4	1.0	-3.6	-2.2	-0.9	-22.9	-5.5	1.8
2004									
March	3.7	2.2	6.1	-2.9	0.8	-2.0	-23.8	1.7	3.0
June	0.9	1.6	7.6	-1.3	5.1	8.7	29.8	6.8	3.7
September	1.0	2.1	7.8	-1.3	5.1	16.3	66.2	4.2	3.7
December	1.0	2.6	7.4	-2.9	4.6	14.9	56.2	1.6	3.6

ACTIVITY, States and territories: **Original**

	NSW	Vic.	Qld	SA	WA	Tas.	NT	ACT	Aust.
Period	\$m	\$m	\$m	\$m	\$m	\$m	\$m	\$m	\$m
VALUE OF WORK COMMENCED DURING PERIOD									
2001-02	5 530.6	3 490.8	5 071.5	1 628.5	4 682.1	484.3	2 227.4	207.9	23 323.2
2002-03	8 964.0	4 886.8	5 562.2	1 591.2	4 620.7	305.7	1 880.2	223.5	28 034.3
2003-04	8 463.0	4 583.0	5 957.5	1 496.5	4 871.2	721.7	1 026.2	267.4	27 386.5
2003									
September	2 210.9	1 349.3	1 862.7	369.0	819.3	94.8	751.0	41.4	7 498.4
December	1 600.5	872.9	1 294.0	328.6	896.9	75.7	76.3	^ 67.7	5 212.8
2004									
March	1 656.2	1 322.6	1 079.5	315.4	2 462.5	464.3	108.6	84.1	7 493.2
June	2 995.4	1 038.2	1 721.3	483.5	692.5	86.9	90.2	74.2	7 182.1
September	2 018.3	1 076.6	3 056.1	427.9	2 694.9	98.5	185.9	61.3	9 619.6
December	1 785.5	1 113.8	1 962.2	352.4	1 413.6	161.2	95.2	52.1	6 935.9
VALUE OF WORK DONE DURING PERIOD									
2001-02	5 597.6	3 389.0	4 627.5	1 417.4	3 119.3	453.8	1 226.7	199.9	20 031.3
2002-03	6 483.7	4 244.3	5 558.8	1 766.4	4 735.3	364.0	1 331.6	244.7	24 728.8
2003-04	7 888.2	4 983.3	5 539.9	1 764.7	4 880.6	485.5	1 619.8	244.9	27 407.0
2003									
September	1 776.6	1 097.2	1 231.7	439.8	1 156.4	75.5	412.7	53.0	6 242.8
December	1 961.4	1 246.2	1 483.5	439.2	1 243.4	117.5	425.3	61.9	6 978.4
2004									
March	1 996.8	1 269.3	1 234.4	398.7	1 148.9	126.5	368.2	60.6	6 603.3
June	2 153.3	1 370.7	1 590.4	487.1	1 331.9	166.0	413.5	69.4	7 582.4
September	2 066.3	1 209.3	1 684.4	379.5	1 350.3	139.7	344.4	74.1	7 248.0
December	2 133.8	1 369.1	1 777.9	399.4	1 435.6	127.7	332.7	58.3	7 634.4
VALUE OF WORK YET TO BE DONE									
2001-02	1 261.7	1 292.4	2 732.5	606.1	2 546.7	64.6	1 044.0	30.6	9 578.7
2002-03	3 811.3	1 916.0	1 913.2	601.8	2 387.6	29.1	1 849.3	26.1	12 534.3
2003-04	4 552.7	1 658.7	2 323.3	318.7	2 803.1	332.8	1 360.5	40.8	13 390.6
2003									
September	4 175.2	2 246.4	2 455.0	498.1	2 139.1	111.4	2 278.3	12.2	13 915.8
December	3 784.6	1 976.5	2 286.8	390.9	1 878.6	83.3	1 956.9	*19.2	12 376.7
2004									
March	3 425.7	2 123.7	^ 2 206.9	326.0	3 251.3	417.1	1 697.9	29.2	13 477.9
June	4 552.7	1 658.7	2 323.3	318.7	2 803.1	332.8	1 360.5	40.8	13 390.6
September	4 454.4	1 595.1	3 380.1	341.0	4 058.9	296.3	1 211.2	^ 38.7	15 375.8
December	3 929.5	1 466.6	3 625.5	300.5	4 209.1	229.1	720.9	10.5	14 491.8

^ estimate has a relative standard error of 10% to less than 25% and should be used with caution

* estimate has a relative standard error of 25% to 50% and should be used with caution

<i>Period</i>	<i>NSW</i>	<i>Vic.</i>	<i>Qld</i>	<i>SA</i>	<i>WA</i>	<i>Tas.</i>	<i>NT</i>	<i>ACT</i>	<i>Aust.</i>
	%	%	%	%	%	%	%	%	%
.....									
VALUE OF WORK COMMENCED DURING PERIOD									
2001-02	-2.2	6.7	33.1	31.4	87.0	95.9	1 236.1	11.6	36.5
2002-03	62.1	40.0	9.7	-2.3	-1.3	-36.9	-15.6	7.5	20.2
2003-04	-5.6	-6.2	7.1	-6.0	5.4	136.1	-45.4	19.6	-2.3
2003									
September	-25.2	36.8	50.8	23.1	-49.9	35.7	-56.3	-36.0	-16.4
December	-27.6	-35.3	-30.5	-10.9	9.5	-20.1	-89.8	63.6	-30.5
2004									
March	3.5	51.5	-16.6	-4.0	174.6	512.9	42.3	24.1	43.7
June	80.9	-21.5	59.5	53.3	-71.9	-81.3	-16.9	-11.8	-4.2
September	-32.6	3.7	77.5	-11.5	289.2	13.4	106.1	-17.3	33.9
December	-11.5	3.5	-35.8	-17.7	-47.5	63.6	-48.8	-15.0	-27.9
.....									
VALUE OF WORK DONE DURING PERIOD									
2001-02	-9.1	5.4	-2.5	25.5	38.2	71.7	629.1	-3.9	10.4
2002-03	15.8	25.2	20.1	24.6	51.8	-19.8	8.5	22.4	23.5
2003-04	21.7	17.4	-0.3	-0.1	3.1	33.4	21.6	0.1	10.8
2003									
September	-5.3	-9.6	-11.7	-12.6	-18.4	-17.7	24.0	-35.3	-9.7
December	10.4	13.6	20.4	-0.1	7.5	55.6	3.1	16.8	11.8
2004									
March	1.8	1.9	-16.8	-9.2	-7.6	7.6	-13.4	-2.0	-5.4
June	7.8	8.0	28.8	22.2	15.9	31.3	12.3	14.5	14.8
September	-4.0	-11.8	5.9	-22.1	1.4	-15.9	-16.7	6.7	-4.4
December	3.3	13.2	5.5	5.3	6.3	-8.6	-3.4	-21.3	5.3
.....									
VALUE OF WORK YET TO BE DONE									
2001-02	-4.4	23.8	33.7	79.8	156.1	34.8	1 319.2	87.2	63.0
2002-03	202.1	48.2	-30.0	-0.7	-6.2	-54.9	77.1	-14.8	30.9
2003-04	19.5	-13.4	21.4	-47.0	17.4	1 043.1	-26.4	56.4	6.8
2003									
September	9.5	17.2	28.3	-17.2	-10.4	282.5	23.2	-53.4	11.0
December	-9.4	-12.0	-6.9	-21.5	-12.2	-25.2	-14.1	57.8	-11.1
2004									
March	-9.5	7.4	-3.5	-16.6	73.1	400.5	-13.2	52.3	8.9
June	32.9	-21.9	5.3	-2.3	-13.8	-20.2	-19.9	39.7	-0.6
September	-2.2	-3.8	45.5	7.0	44.8	-11.0	-11.0	-5.3	14.8
December	-11.8	-8.1	7.3	-11.9	3.7	-22.7	-40.5	-72.8	-5.7

Period	Roads, highways and subdivisions	Bridges	Railways	Harbours	Water storage and supply	Sewerage and drainage	Electricity generation, transmission and distribution
	\$m	\$m	\$m	\$m	\$m	\$m	\$m
.....							
VALUE OF WORK COMMENCED DURING PERIOD							
2001-02	4 968.0	349.5	1 111.0	392.0	574.2	827.2	3 082.8
2002-03	8 098.4	267.0	2 224.6	379.7	790.4	1 133.7	2 494.7
2003-04	8 224.1	402.3	1 467.8	1 235.5	1 378.1	1 342.2	3 830.7
2003							
September	2 085.5	56.8	594.0	95.1	^ 380.6	^ 537.6	1 224.8
December	1 613.6	^ 75.9	151.4	^ 55.5	^ 402.0	264.8	638.7
2004							
March	1 754.7	171.5	487.7	1 050.2	^ 255.5	^ 246.7	1 312.6
June	2 770.3	98.0	234.7	^ 34.7	^ 340.0	^ 293.1	654.6
September	2 280.8	^ 75.2	241.9	*77.8	^ 524.3	556.6	2 077.5
December	1 984.8	^ 52.9	370.6	54.1	^ 182.0	^ 212.6	846.4
.....							
VALUE OF WORK DONE DURING PERIOD							
2001-02	5 179.7	326.3	867.2	320.1	592.8	729.6	3 121.4
2002-03	6 324.3	311.7	1 287.1	298.8	633.3	974.4	3 293.6
2003-04	7 636.8	258.1	1 507.9	453.8	911.3	1 323.0	3 566.4
2003							
September	1 619.7	^ 58.6	348.6	108.8	^ 205.2	^ 320.9	823.5
December	1 854.9	68.7	310.5	95.7	^ 232.5	320.6	877.0
2004							
March	1 884.8	58.6	394.7	^ 88.9	219.5	^ 322.0	895.9
June	2 277.4	72.2	454.0	160.4	254.2	359.6	969.9
September	2 053.0	89.6	453.0	195.3	284.0	^ 321.8	954.4
December	2 272.0	87.1	545.8	222.7	312.1	295.6	1 005.9
.....							
VALUE OF WORK YET TO BE DONE DURING PERIOD							
2001-02	1 275.7	115.1	611.5	140.9	398.7	346.7	1 371.0
2002-03	3 117.6	85.2	1 553.5	206.6	320.9	502.5	733.8
2003-04	3 928.0	240.5	1 696.6	950.6	475.2	655.2	1 289.0
2003							
September	3 500.9	81.6	1 802.1	200.1	*500.5	^ 644.3	1 169.7
December	3 235.8	90.2	1 701.5	142.9	*627.9	^ 725.9	978.2
2004							
March	3 193.2	190.4	1 757.6	1 068.8	*623.4	^ 670.6	1 513.3
June	3 928.0	240.5	1 696.6	950.6	^ 475.2	^ 655.2	1 289.0
September	4 165.9	^ 236.8	1 679.8	781.9	^ 688.6	650.0	2 305.0
December	3 761.0	184.9	1 607.3	621.3	^ 594.8	533.3	2 021.4

^ estimate has a relative standard error of 10% to less than 25% and should be used with caution

* estimate has a relative standard error of 25% to 50% and should be used with caution

Period	Pipelines	Recreation	Telecom- munications	Oil, gas, coal and other minerals	Other heavy industry	Other	Total
	\$m	\$m	\$m	\$m	\$m	\$m	\$m
VALUE OF WORK COMMENCED DURING PERIOD							
2001-02	1 281.2	1 089.3	3 273.2	5 881.8	254.8	238.2	23 323.2
2002-03	851.0	1 471.6	2 951.9	6 866.7	199.2	305.4	28 034.3
2003-04	973.5	1 430.3	3 020.2	3 485.5	310.9	285.7	27 386.5
2003							
September	748.4	^ 377.2	575.0	633.8	94.6	^ 94.9	7 498.4
December	67.9	^ 328.7	811.8	677.9	*54.8	^ 69.8	5 212.8
2004							
March	^ 91.1	^ 389.1	699.3	919.1	^ 43.1	^ 72.5	7 493.2
June	^ 66.0	^ 335.2	934.0	1 254.7	118.4	^ 48.5	7 182.1
September	^ 92.2	^ 534.5	788.4	2 139.7	180.7	^ 50.1	9 619.6
December	^ 160.1	^ 534.3	811.9	1 591.0	^ 37.4	^ 97.8	6 935.9
VALUE OF WORK DONE DURING PERIOD							
2001-02	547.9	1 141.4	3 467.4	3 139.5	365.7	232.4	20 031.3
2002-03	938.7	1 380.7	3 161.3	5 635.0	230.0	259.8	24 728.8
2003-04	1 414.2	1 402.2	2 995.7	5 385.1	293.6	258.9	27 407.0
2003							
September	404.1	^ 333.8	572.2	1 318.5	51.9	^ 77.1	6 242.8
December	374.8	^ 348.9	815.5	1 498.8	^ 109.9	^ 70.8	6 978.4
2004							
March	307.0	^ 350.9	726.8	1 238.6	53.3	^ 62.2	6 603.3
June	328.4	368.6	881.2	1 329.2	78.5	^ 48.9	7 582.4
September	207.2	^ 396.6	806.6	1 306.4	130.5	^ 49.6	7 248.0
December	178.8	459.2	844.4	1 271.9	72.6	^ 66.3	7 634.4
VALUE OF WORK YET TO BE DONE DURING PERIOD							
2001-02	832.4	88.6	531.4	3 740.8	109.5	16.4	9 578.7
2002-03	748.9	131.5	119.7	4 930.6	73.1	10.4	12 534.3
2003-04	305.7	152.8	148.7	3 449.4	79.9	19.1	13 390.6
2003							
September	1 076.0	155.7	85.0	4 555.8	115.1	^ 29.1	13 915.8
December	781.3	129.5	100.7	3 768.4	^ 67.1	27.4	12 376.7
2004							
March	571.1	^ 205.2	*119.3	3 459.1	64.0	*42.0	13 477.9
June	305.7	152.8	148.7	3 449.4	79.9	*19.1	13 390.6
September	155.8	^ 210.0	125.0	4 226.6	136.4	^ 13.9	15 375.8
December	^ 61.4	^ 270.0	192.1	4 497.4	101.0	^ 45.8	14 491.8

^ estimate has a relative standard error of 10% to less than 25% and should be used with caution

* estimate has a relative standard error of 25% to 50% and should be used with caution

Period	Roads, highways and subdivisions	Bridges	Railways	Harbours	Water storage and supply	Sewerage and drainage	Electricity generation, transmission and distribution
	\$m	\$m	\$m	\$m	\$m	\$m	\$m
BY THE PRIVATE SECTOR FOR THE PRIVATE SECTOR							
2001-02	1 564.5	70.5	575.7	127.2	126.0	208.3	1 327.1
2002-03	4 404.2	54.0	553.0	194.0	176.8	311.9	1 048.7
2003-04	4 154.5	38.1	184.2	1 133.9	322.4	383.2	1 818.0
2003							
September	^ 812.4	^ 6.6	53.5	^ 51.7	*55.5	**132.3	365.0
December	898.1	**3.0	^ 14.8	*29.0	*92.2	^ 86.4	266.1
2004							
March	783.1	^ 17.3	92.6	1 037.2	^ 80.2	^ 92.3	946.5
June	1 660.9	*11.1	^ 23.3	*15.9	^ 94.6	^ 72.1	240.4
September	^ 1 085.1	*23.7	^ 60.4	*59.2	118.1	^ 73.2	492.8
December	877.5	*12.9	158.7	41.3	^ 79.5	^ 53.9	^ 278.2
BY THE PRIVATE SECTOR FOR THE PUBLIC SECTOR							
2001-02	1 568.1	165.8	54.8	206.0	107.2	321.3	614.0
2002-03	1 639.8	112.4	1 212.4	140.6	193.2	478.4	143.5
2003-04	2 107.6	258.0	807.3	60.3	597.1	527.3	256.8
2003							
September	605.3	*15.6	277.0	17.4	^ 90.0	^ 85.1	82.9
December	334.4	^ 43.8	3.3	*19.3	199.7	147.3	56.8
2004							
March	526.4	130.4	379.3	7.2	95.2	^ 125.3	^ 35.3
June	641.4	68.2	147.8	16.4	*212.3	*169.7	*81.8
September	441.6	21.2	^ 89.0	*12.8	^ 189.4	220.4	1 050.6
December	539.7	^ 16.5	53.5	7.2	^ 46.7	*41.0	^ 85.0
TOTAL BY THE PRIVATE SECTOR							
2001-02	3 132.6	236.3	630.5	333.3	233.2	529.6	1 941.1
2002-03	6 044.0	166.5	1 765.3	334.6	370.0	790.3	1 192.1
2003-04	6 262.1	296.1	991.5	1 194.2	919.6	910.5	2 074.8
2003							
September	1 417.8	^ 22.2	330.4	^ 69.1	^ 145.5	^ 217.4	447.9
December	1 232.6	^ 46.8	^ 18.1	*48.4	291.9	^ 233.7	322.8
2004							
March	1 309.5	147.8	471.9	1 044.4	^ 175.4	^ 217.5	981.8
June	2 302.2	79.3	171.1	^ 32.3	^ 306.9	*241.8	^ 322.2
September	1 526.7	^ 44.9	^ 149.4	*72.0	307.4	293.6	1 543.4
December	1 417.2	^ 29.5	212.2	48.6	^ 126.2	^ 94.9	^ 363.2

^ estimate has a relative standard error of 10% to less than 25% and should be used with caution

* estimate has a relative standard error of 25% to 50% and should be used with caution

** estimate has a relative standard error greater than 50% and is considered too unreliable for general use

Period	Pipelines	Recreation	Telecom- munications	Oil, gas, coal and other minerals	Other heavy industry	Other	Total
	\$m	\$m	\$m	\$m	\$m	\$m	\$m
BY THE PRIVATE SECTOR FOR THE PRIVATE SECTOR							
2001-02	1 241.7	786.9	295.7	5 878.6	254.6	194.9	12 651.7
2002-03	817.6	1 012.4	276.2	6 841.8	193.7	260.2	16 144.5
2003-04	949.8	1 070.7	751.0	3 477.1	284.8	250.6	14 818.2
2003							
September	738.8	^ 261.5	^ 160.8	628.4	93.7	^ 84.0	3 444.2
December	62.2	^ 253.3	213.3	676.8	*30.8	^ 64.1	2 690.1
2004							
March	^ 85.3	^ 283.5	^ 237.3	917.2	^ 41.9	^ 68.3	4 682.8
June	^ 63.5	^ 272.4	139.6	1 254.7	118.4	^ 34.1	4 001.1
September	^ 90.3	^ 360.5	188.7	2 137.0	180.7	^ 43.9	4 913.6
December	^ 152.2	^ 418.4	253.3	1 529.7	^ 37.2	^ 84.7	3 977.6

BY THE PRIVATE SECTOR FOR THE PUBLIC SECTOR							
2001-02	11.4	136.3	190.5	2.6	0.3	41.8	3 420.1
2002-03	3.4	257.4	148.8	0.7	5.5	39.5	4 375.6
2003-04	2.1	206.2	70.1	4.2	23.7	29.3	4 950.2
2003							
September	** —	*55.4	^ 2.1	**4.1	0.3	**8.1	1 243.3
December	—	*48.5	^ 1.5	—	**22.2	**4.3	881.1
2004							
March	—	*67.9	*8.3	*0.2	1.2	*3.2	1 379.7
June	**2.1	*34.4	58.3	—	—	**13.7	1 446.1
September	*0.4	^ 43.5	*12.0	—	—	^ 3.7	2 084.7
December	*6.7	*50.3	**8.0	57.1	—	*11.6	923.3

TOTAL BY THE PRIVATE SECTOR							
2001-02	1 253.1	923.1	486.3	5 881.2	254.8	236.6	16 071.8
2002-03	821.1	1 269.9	425.0	6 842.5	199.2	299.6	20 520.1
2003-04	951.9	1 276.8	821.2	3 481.3	308.5	279.8	19 768.4
2003							
September	738.8	^ 316.9	^ 162.8	632.5	94.0	^ 92.1	4 687.5
December	62.2	^ 301.8	214.8	676.8	*53.0	^ 68.4	3 571.2
2004							
March	^ 85.3	^ 351.4	^ 245.6	917.4	^ 43.1	^ 71.5	6 062.5
June	^ 65.6	^ 306.8	198.0	1 254.7	118.4	^ 47.9	5 447.1
September	^ 90.7	^ 404.1	200.7	2 137.1	180.7	^ 47.6	6 998.3
December	^ 158.8	^ 468.7	261.3	1 586.8	^ 37.2	^ 96.3	4 900.8

^ estimate has a relative standard error of 10% to less than 25% and should be used with caution

* estimate has a relative standard error of 25% to 50% and should be used with caution

** estimate has a relative standard error greater than 50% and is considered too unreliable for general use

— nil or rounded to zero (including null cells)

Period	Roads, highways and subdivisions	Bridges	Railways	Harbours	Water storage and supply	Sewerage and drainage	Electricity generation, transmission and distribution
	\$m	\$m	\$m	\$m	\$m	\$m	\$m
BY THE PRIVATE SECTOR FOR THE PRIVATE SECTOR							
2001-02	1 544.7	32.8	269.7	102.8	141.2	155.5	1 349.2
2002-03	2 457.3	74.0	524.4	138.0	163.3	279.8	1 317.2
2003-04	3 942.4	42.9	270.6	285.4	292.8	478.8	1 471.5
2003							
September	^ 842.9	13.2	83.7	^ 45.7	*59.4	**138.2	343.7
December	1 028.2	^ 8.5	68.2	^ 47.9	^ 78.5	^ 125.8	330.7
2004							
March	992.9	*10.3	48.8	^ 61.6	^ 74.8	^ 113.8	386.8
June	1 078.3	**10.9	70.0	130.2	^ 80.1	^ 101.1	410.4
September	1 158.0	*16.8	98.0	159.2	^ 76.0	^ 90.6	382.5
December	1 245.7	^ 20.8	177.8	203.0	^ 87.3	^ 83.3	424.3
BY THE PRIVATE SECTOR FOR THE PUBLIC SECTOR							
2001-02	1 949.8	176.3	63.6	152.6	211.7	340.7	353.3
2002-03	1 974.4	145.6	230.5	117.8	182.0	422.7	431.6
2003-04	1 749.3	123.1	651.4	121.9	347.4	559.9	272.9
2003							
September	387.1	^ 26.5	122.8	37.1	*80.1	^ 122.8	^ 69.4
December	393.9	^ 33.0	115.2	^ 40.8	^ 74.9	130.8	^ 71.0
2004							
March	426.4	^ 29.6	203.4	20.8	76.3	^ 135.1	^ 62.9
June	541.9	33.9	210.0	23.2	116.0	^ 171.2	^ 69.6
September	500.6	53.8	165.5	^ 30.5	135.8	^ 163.6	^ 79.4
December	576.9	^ 44.9	194.6	^ 14.5	^ 144.9	^ 138.5	^ 84.2
TOTAL BY THE PRIVATE SECTOR							
2001-02	3 494.5	209.1	333.3	255.4	352.8	496.2	1 702.5
2002-03	4 431.7	219.6	754.9	255.8	345.3	702.5	1 748.8
2003-04	5 691.7	166.0	922.0	407.3	640.1	1 038.7	1 744.4
2003							
September	1 230.0	^ 39.7	206.5	82.9	^ 139.5	^ 261.0	413.0
December	1 422.1	^ 41.5	183.4	^ 88.7	^ 153.4	256.6	401.7
2004							
March	1 419.4	^ 39.9	252.2	^ 82.4	^ 151.0	^ 248.9	449.6
June	1 620.3	^ 44.8	280.0	153.3	196.1	^ 272.3	480.0
September	1 658.6	70.6	263.5	189.7	211.8	^ 254.1	461.8
December	1 822.6	^ 65.7	372.4	217.5	232.2	^ 221.8	508.5

^ estimate has a relative standard error of 10% to less than 25% and should be used with caution

* estimate has a relative standard error of 25% to 50% and should be used with caution

** estimate has a relative standard error greater than 50% and is considered too unreliable for general use

Period	Pipelines	Recreation	Telecom- munications	Oil, gas, coal and other minerals	Other heavy industry	Other	Total
	\$m	\$m	\$m	\$m	\$m	\$m	\$m
BY THE PRIVATE SECTOR FOR THE PRIVATE SECTOR							
2001-02	500.2	779.6	362.1	3 105.7	364.9	190.6	8 899.0
2002-03	907.2	1 006.8	353.7	5 610.1	224.5	226.7	13 283.0
2003-04	1 384.8	1 026.6	767.2	5 374.4	268.4	231.0	15 837.1
2003							
September	396.7	^ 245.2	^ 163.9	1 315.6	51.7	^ 66.9	3 766.8
December	365.6	^ 249.4	215.1	1 496.3	^ 87.8	^ 64.9	4 166.9
2004							
March	297.5	^ 249.3	^ 254.4	1 236.7	51.1	^ 58.4	3 836.4
June	325.0	^ 282.7	133.8	1 325.8	77.8	^ 40.9	4 067.0
September	205.4	^ 303.1	189.2	1 303.8	130.5	^ 41.3	4 154.5
December	176.5	^ 367.6	263.7	1 267.6	72.3	^ 54.5	4 444.4
BY THE PRIVATE SECTOR FOR THE PUBLIC SECTOR							
2001-02	16.3	172.4	320.5	33.2	0.8	40.5	3 831.7
2002-03	8.5	216.6	279.3	0.7	5.5	27.7	4 042.8
2003-04	8.7	213.9	44.4	3.9	22.8	21.6	4 141.1
2003							
September	*0.7	^ 59.4	12.6	**1.7	0.1	**8.0	928.4
December	*2.4	*62.1	^ 2.1	**1.3	**21.6	**4.3	953.5
2004							
March	2.7	*53.9	*18.6	*0.2	0.3	*2.8	1 033.1
June	**2.9	^ 38.4	11.0	*0.8	0.7	*6.4	1 226.2
September	*0.5	^ 48.6	^ 28.9	—	—	6.4	1 213.5
December	*1.0	*38.8	^ 29.6	0.1	—	*10.5	1 278.6
TOTAL BY THE PRIVATE SECTOR							
2001-02	516.5	952.0	682.6	3 138.8	365.7	231.1	12 730.7
2002-03	915.7	1 223.4	633.0	5 610.8	230.0	254.5	17 325.9
2003-04	1 393.6	1 240.5	811.6	5 378.3	291.2	252.6	19 978.1
2003							
September	397.4	^ 304.6	^ 176.5	1 317.3	51.8	^ 74.9	4 695.1
December	367.9	^ 311.5	217.2	1 497.6	^ 109.4	^ 69.2	5 120.4
2004							
March	300.3	^ 303.3	^ 273.0	1 236.9	51.4	^ 61.2	4 869.5
June	328.0	^ 321.2	144.8	1 326.5	78.5	^ 47.3	5 293.1
September	205.9	^ 351.7	218.2	1 303.8	130.5	^ 47.8	5 368.0
December	177.5	^ 406.4	293.3	1 267.7	72.3	^ 65.0	5 723.0

^ estimate has a relative standard error of 10% to less than 25% and should be used with caution

* estimate has a relative standard error of 25% to 50% and should be used with caution

** estimate has a relative standard error greater than 50% and is considered too unreliable for general use

— nil or rounded to zero (including null cells)

Period	Roads, highways and subdivisions	Bridges	Railways	Harbours	Water storage and supply	Sewerage and drainage	Electricity generation, transmission and distribution
	\$m	\$m	\$m	\$m	\$m	\$m	\$m
BY THE PRIVATE SECTOR FOR THE PRIVATE SECTOR							
2001-02	270.6	36.5	339.2	51.3	9.3	73.0	572.2
2002-03	2 347.2	14.3	360.7	83.9	26.9	118.9	398.5
2003-04	2 795.8	25.8	300.7	891.7	52.9	58.6	1 028.3
2003							
September	2 312.0	10.5	336.5	74.0	^ 23.8	89.7	469.9
December	2 187.7	5.5	311.0	61.4	*41.2	79.6	448.4
2004							
March	2 045.4	12.1	361.7	1 005.2	^ 26.7	68.0	1 114.7
June	2 795.8	25.8	300.7	891.7	^ 52.9	58.6	1 028.3
September	2 737.6	21.3	344.1	747.7	77.8	48.8	1 044.3
December	2 387.0	14.9	379.3	595.5	64.1	39.0	780.8
BY THE PRIVATE SECTOR FOR THE PUBLIC SECTOR							
2001-02	766.6	57.4	26.2	88.2	46.8	149.9	345.2
2002-03	486.1	42.6	1 017.6	110.9	85.9	264.9	125.4
2003-04	911.0	178.9	1 239.3	58.2	379.5	349.3	161.2
2003							
September	703.6	31.6	1 167.4	115.4	^ 114.0	236.3	120.3
December	645.6	44.1	1 086.6	78.8	229.8	328.0	150.1
2004							
March	765.0	142.2	1 256.3	62.4	227.3	299.5	136.1
June	911.0	178.9	1 239.3	58.2	^ 379.5	^ 349.3	^ 161.2
September	878.0	^ 190.7	1 205.4	33.2	^ 434.6	388.8	1 127.3
December	846.8	^ 146.5	1 116.9	24.5	^ 377.2	285.1	1 122.0
TOTAL BY THE PRIVATE SECTOR							
2001-02	1 037.2	93.9	365.5	139.5	56.1	222.9	917.4
2002-03	2 833.2	56.8	1 378.3	194.8	112.8	383.8	523.8
2003-04	3 706.7	204.7	1 540.0	949.9	432.4	407.9	1 189.5
2003							
September	3 015.6	42.1	1 503.9	189.4	^ 137.8	326.0	590.2
December	2 833.2	49.6	1 397.6	140.2	271.0	407.5	598.5
2004							
March	2 810.5	154.3	1 618.0	1 067.6	254.0	367.5	1 250.8
June	3 706.7	204.7	1 540.0	949.9	^ 432.4	^ 407.9	1 189.5
September	3 615.7	^ 212.0	1 549.6	780.9	^ 512.4	437.6	2 171.6
December	3 233.8	^ 161.4	1 496.2	620.0	^ 441.3	324.1	1 902.8

^ estimate has a relative standard error of 10% to less than 25% and should be used with caution

* estimate has a relative standard error of 25% to 50% and should be used with caution

Period	Pipelines	Recreation	Telecom- munications	Oil, gas, coal and other minerals	Other heavy industry	Other	Total
	\$m	\$m	\$m	\$m	\$m	\$m	\$m
BY THE PRIVATE SECTOR FOR THE PRIVATE SECTOR							
2001-02	826.0	45.5	114.0	3 740.8	109.5	8.9	6 196.7
2002-03	747.8	28.1	15.4	4 930.6	73.1	7.2	9 152.4
2003-04	305.4	71.4	19.1	3 447.0	79.9	15.5	9 092.1
2003							
September	1 071.7	^ 45.6	5.2	4 553.5	114.4	^ 25.4	9 132.1
December	775.7	^ 33.8	3.9	3 768.2	^ 65.1	23.5	7 804.8
2004							
March	568.5	*71.1	**38.1	3 459.1	63.0	*37.5	8 871.1
June	305.4	^ 71.4	19.1	3 447.0	79.9	*15.5	9 092.1
September	155.4	85.0	12.3	4 226.6	136.4	*8.3	9 645.8
December	*55.3	^ 127.6	^ 78.3	4 440.4	100.2	^ 39.3	9 101.5

BY THE PRIVATE SECTOR FOR THE PUBLIC SECTOR							
2001-02	—	13.1	413.4	—	—	7.4	1 914.4
2002-03	0.2	54.2	103.8	—	—	3.1	2 294.7
2003-04	0.1	30.9	128.7	2.4	—	2.4	3 441.8
2003							
September	**0.3	42.2	62.9	**2.3	0.2	3.2	2 599.7
December	*3.0	29.8	78.2	**0.2	—	3.0	2 677.2
2004							
March	0.9	*50.1	79.7	—	1.0	3.3	3 023.8
June	**0.1	30.9	128.7	2.4	—	2.4	3 441.8
September	*—	^ 17.1	111.7	—	—	4.5	4 391.4
December	*5.7	*28.6	112.5	57.0	—	^ 6.2	4 129.0

TOTAL BY THE PRIVATE SECTOR							
2001-02	826.0	58.5	527.4	3 740.8	109.5	16.4	8 111.1
2002-03	748.0	82.3	119.2	4 930.6	73.1	10.4	11 447.1
2003-04	305.5	102.3	147.8	3 449.4	79.9	17.9	12 533.9
2003							
September	1 072.1	87.8	68.1	4 555.8	114.6	^ 28.5	11 731.8
December	778.7	63.6	82.1	3 768.4	^ 65.1	26.5	10 482.0
2004							
March	569.4	^ 121.2	*117.8	3 459.1	64.0	*40.8	11 894.9
June	305.5	^ 102.3	147.8	3 449.4	79.9	*17.9	12 533.9
September	155.5	102.0	123.9	4 226.6	136.4	^ 12.8	14 037.2
December	^ 61.0	^ 156.1	190.9	4 497.4	100.2	^ 45.4	13 230.5

^ estimate has a relative standard error of 10% to less than 25% and should be used with caution

* estimate has a relative standard error of 25% to 50% and should be used with caution

** estimate has a relative standard error greater than 50% and is considered too unreliable for general use

— nil or rounded to zero (including null cells)

Period	Roads, highways and subdivisions	Bridges	Railways	Harbours	Water storage and supply	Sewerage and drainage	Electricity generation, transmission and distribution
	\$m	\$m	\$m	\$m	\$m	\$m	\$m
VALUE OF WORK COMMENCED DURING PERIOD							
2001-02	1 835.4	113.2	480.5	58.8	341.0	297.6	1 141.7
2002-03	2 054.4	100.5	459.3	45.1	420.3	343.4	1 302.6
2003-04	1 962.0	106.2	476.2	41.3	458.5	431.7	1 756.0
2003							
September	667.8	34.6	263.5	26.0	^ 235.1	^ 320.2	776.9
December	381.0	*29.1	133.3	^ 7.1	*110.2	31.1	315.8
2004							
March	445.2	^ 23.8	15.8	^ 5.8	**80.1	^ 29.2	330.9
June	468.0	^ 18.7	63.6	2.4	33.1	*51.2	332.4
September	754.1	30.3	92.5	5.8	^ 216.8	^ 263.0	534.1
December	^ 567.5	23.5	158.4	*5.6	^ 55.9	^ 117.7	483.2
VALUE OF WORK DONE DURING PERIOD							
2001-02	1 685.2	117.1	533.9	64.6	239.9	233.4	1 418.9
2002-03	1 892.6	92.1	532.1	43.1	288.0	271.9	1 544.9
2003-04	1 945.1	92.1	585.9	46.5	271.1	284.3	1 822.0
2003							
September	389.7	18.9	142.2	25.9	^ 65.6	^ 59.8	410.5
December	432.8	27.1	127.2	^ 6.9	^ 79.0	^ 64.0	475.3
2004							
March	465.5	18.7	142.5	^ 6.5	^ 68.4	*73.2	446.3
June	657.1	27.4	174.0	7.1	58.1	^ 87.3	489.9
September	394.4	19.0	189.5	5.6	^ 72.2	^ 67.6	492.6
December	449.4	21.3	173.4	^ 5.2	^ 79.9	73.8	497.4
VALUE OF WORK YET TO BE DONE							
2001-02	238.5	21.2	246.1	1.4	342.6	123.7	453.6
2002-03	284.4	28.3	175.2	11.9	208.1	118.7	210.0
2003-04	221.2	35.7	156.7	0.8	42.8	247.3	99.5
2003							
September	485.3	39.5	298.2	**10.7	*362.7	^ 318.3	579.5
December	402.6	^ 40.7	303.9	^ 2.7	**356.9	*318.3	379.7
2004							
March	382.7	*36.1	139.6	1.3	**369.4	*303.1	262.5
June	221.2	**35.7	156.7	0.8	^ 42.8	**247.3	99.5
September	550.2	24.8	130.3	1.0	*176.1	^ 212.4	133.4
December	^ 527.2	23.5	111.1	*1.4	*153.5	^ 209.2	118.6

^ estimate has a relative standard error of 10% to less than 25% and should be used with caution

* estimate has a relative standard error of 25% to 50% and should be used with caution

** estimate has a relative standard error greater than 50% and is considered too unreliable for general use

Period	Pipelines	Recreation	Telecom- munications	Oil, gas, coal and other minerals	Other heavy industry	Other	Total
	\$m	\$m	\$m	\$m	\$m	\$m	\$m
VALUE OF WORK COMMENCED DURING PERIOD							
2001-02	28.1	166.1	2 786.9	0.7	—	1.6	7 251.4
2002-03	30.0	201.7	2 526.9	24.2	—	5.7	7 514.1
2003-04	21.6	153.4	2 199.0	4.1	2.4	5.9	7 618.1
2003							
September	**9.7	60.3	412.2	1.2	**0.6	^ 2.8	2 810.8
December	*5.7	26.9	597.0	1.1	**1.8	^ 1.4	1 641.6
2004							
March	*5.8	37.7	453.7	1.7	—	1.0	1 430.6
June	0.4	^ 28.4	736.1	—	—	*0.6	1 735.0
September	1.5	*130.4	587.7	2.6	—	2.5	2 621.3
December	1.3	^ 65.6	550.6	4.2	0.2	1.5	2 035.1

VALUE OF WORK DONE DURING PERIOD							
2001-02	31.4	189.4	2 784.8	0.7	—	1.2	7 300.6
2002-03	23.0	157.4	2 528.3	24.2	—	5.4	7 402.9
2003-04	20.6	161.7	2 184.1	6.8	2.4	6.3	7 428.8
2003							
September	*6.7	29.2	395.7	1.2	**—	^ 2.3	1 547.7
December	*6.8	37.4	598.3	1.1	**0.5	^ 1.5	1 858.0
2004							
March	*6.7	^ 47.6	453.8	1.7	**1.9	^ 1.0	1 733.8
June	0.4	47.4	736.4	2.7	—	1.5	2 289.2
September	1.2	^ 44.9	588.4	2.6	—	1.8	1 880.0
December	1.3	^ 52.8	551.0	4.2	0.3	1.3	1 911.5

VALUE OF WORK YET TO BE DONE							
2001-02	6.4	30.1	4.0	—	—	—	1 467.6
2002-03	0.9	49.2	0.5	—	—	0.1	1 087.2
2003-04	0.1	50.5	0.9	—	—	1.2	856.7
2003							
September	**3.9	67.9	16.9	—	**0.5	0.6	2 184.0
December	**2.6	66.0	^ 18.6	—	**1.9	0.9	^ 1 894.7
2004							
March	**1.7	^ 84.0	1.5	—	—	^ 1.2	^ 1 583.0
June	0.1	50.5	0.9	—	—	1.2	^ 856.7
September	0.4	*107.9	**1.1	—	—	1.0	1 338.7
December	0.4	*113.9	*1.2	—	0.9	0.4	1 261.3

^ estimate has a relative standard error of 10% to less than 25% and should be used with caution

* estimate has a relative standard error of 25% to 50% and should be used with caution

** estimate has a relative standard error greater than 50% and is considered too unreliable for general use

— nil or rounded to zero (including null cells)

Period	Roads, highways and subdivisions	Bridges	Railways	Harbours	Water storage and supply	Sewerage and drainage	Electricity generation, transmission and distribution
	\$m	\$m	\$m	\$m	\$m	\$m	\$m
VALUE OF WORK COMMENCED DURING PERIOD							
2001-02	3 403.5	279.0	535.3	264.8	448.2	618.9	1 755.6
2002-03	3 694.2	213.0	1 671.6	185.7	613.6	821.8	1 446.0
2003-04	4 069.6	364.2	1 283.6	101.6	1 055.6	959.0	2 012.7
2003							
September	1 273.1	50.2	540.5	43.3	^ 325.1	^ 405.3	859.8
December	715.5	^ 72.9	136.6	^ 26.4	^ 309.9	178.4	372.6
2004							
March	971.7	154.2	395.1	13.0	*175.3	154.4	366.1
June	1 109.4	86.9	211.3	18.8	*245.4	*220.9	414.2
September	1 195.7	51.5	181.5	*18.6	^ 406.2	^ 483.4	1 584.6
December	1 107.2	40.0	211.9	^ 12.8	^ 102.5	^ 158.7	568.2
VALUE OF WORK DONE DURING PERIOD							
2001-02	3 635.0	293.4	597.5	217.2	451.6	574.1	1 772.2
2002-03	3 867.0	237.7	762.6	160.9	470.0	694.5	1 976.4
2003-04	3 694.4	215.1	1 237.3	168.3	618.5	844.2	2 094.8
2003							
September	776.8	^ 45.4	265.0	63.0	^ 145.8	^ 182.6	479.9
December	826.6	^ 60.2	242.4	^ 47.7	^ 154.0	194.8	546.3
2004							
March	891.9	48.3	346.0	27.3	144.7	^ 208.3	509.2
June	1 199.1	61.3	384.0	30.3	174.0	^ 258.5	559.5
September	895.0	72.7	355.0	36.1	208.0	^ 231.2	571.9
December	1 026.3	66.2	368.0	^ 19.7	224.9	212.3	581.6
VALUE OF WORK YET TO BE DONE							
2001-02	1 005.1	78.6	272.3	89.7	389.4	273.7	798.8
2002-03	770.5	70.9	1 192.8	122.7	294.0	383.7	335.3
2003-04	1 132.2	214.6	1 395.9	59.0	422.3	596.6	260.7
2003							
September	1 188.9	71.0	1 465.6	126.1	*476.8	^ 554.6	699.8
December	1 048.1	^ 84.8	1 390.5	81.5	*586.6	^ 646.3	529.8
2004							
March	1 147.8	178.3	1 395.9	63.6	*596.7	^ 602.6	398.6
June	1 132.2	214.6	1 395.9	59.0	^ 422.3	^ 596.6	260.7
September	1 428.2	^ 215.5	1 335.7	34.2	^ 610.7	601.2	1 260.7
December	1 374.0	^ 170.1	1 228.0	25.9	^ 530.7	494.4	1 240.7

^ estimate has a relative standard error of 10% to less than 25% and should be used with caution

* estimate has a relative standard error of 25% to 50% and should be used with caution

Period	Pipelines	Recreation	Telecom- munications	Oil, gas, coal and other minerals	Other heavy industry	Other	Total
	\$m	\$m	\$m	\$m	\$m	\$m	\$m
VALUE OF WORK COMMENCED DURING PERIOD							
2001-02	39.5	302.4	2 977.5	3.2	0.3	43.4	10 671.5
2002-03	33.4	459.1	2 675.7	24.9	5.5	45.2	11 889.7
2003-04	23.7	359.6	2 269.1	8.4	26.1	35.2	12 568.3
2003							
September	**9.7	^ 115.8	414.3	**5.3	*0.9	*11.0	4 054.2
December	*5.7	^ 75.4	598.5	1.1	**24.0	*5.7	2 522.7
2004							
March	*5.8	^ 105.6	462.0	1.9	1.2	*4.2	2 810.4
June	**2.5	^ 62.8	794.4	—	—	**14.3	3 181.1
September	1.9	^ 174.0	599.7	2.7	—	6.2	4 706.0
December	*7.9	^ 115.9	558.6	61.3	0.2	^ 13.1	2 958.3
VALUE OF WORK DONE DURING PERIOD							
2001-02	47.7	361.8	3 105.3	33.8	0.8	41.7	11 132.3
2002-03	31.5	374.0	2 807.6	24.9	5.5	33.1	11 445.8
2003-04	29.4	375.5	2 228.5	10.7	25.2	27.9	11 569.9
2003							
September	*7.4	^ 88.6	408.3	*2.9	^ 0.2	*10.3	2 476.1
December	*9.2	^ 99.5	600.4	*2.5	**22.1	*5.9	2 811.5
2004							
March	*9.5	^ 101.6	472.4	1.9	**2.2	*3.8	2 766.9
June	*3.3	^ 85.8	747.4	3.4	0.7	^ 8.0	3 515.4
September	1.7	^ 93.5	617.4	2.7	—	8.2	3 093.5
December	^ 2.3	^ 91.6	580.7	4.3	0.3	*11.8	3 190.0
VALUE OF WORK YET TO BE DONE							
2001-02	6.4	43.2	417.4	—	—	7.4	3 382.1
2002-03	1.1	103.4	104.3	—	—	3.2	3 381.9
2003-04	0.2	81.4	129.6	2.4	—	3.5	4 298.5
2003							
September	**4.3	110.1	79.8	**2.3	*0.7	3.7	4 783.6
December	*5.6	95.8	96.8	**0.2	**2.0	3.9	4 571.9
2004							
March	**2.6	^ 134.1	81.2	—	1.0	4.5	4 606.8
June	*0.2	81.4	129.6	2.4	—	3.5	4 298.5
September	0.4	*125.0	112.8	—	—	5.5	5 730.0
December	*6.1	^ 142.4	113.7	57.0	0.9	^ 6.5	5 390.3

^ estimate has a relative standard error of 10% to less than 25% and should be used with caution

* estimate has a relative standard error of 25% to 50% and should be used with caution

** estimate has a relative standard error greater than 50% and is considered too unreliable for general use

— nil or rounded to zero (including null cells)

Period	Roads, highways and subdivisions	Bridges, railways and harbours	Electricity generation, transmission etc. and pipelines	Water storage and supply, sewerage and drainage	Telecom- munications	Heavy industry	Recreation and other	Total
	\$m	\$m	\$m	\$m	\$m	\$m	\$m	\$m
VALUE OF WORK COMMENCED DURING PERIOD								
2001-02	1 672.7	592.5	1 000.6	417.6	1 190.2	408.0	249.0	5 530.6
2002-03	4 043.2	1 392.9	1 020.2	656.5	1 015.0	401.7	434.6	8 964.0
2003-04	3 572.1	634.4	1 120.3	953.0	1 064.0	579.5	539.7	8 463.0
2003								
September	^ 667.0	284.8	425.8	^ 281.2	217.0	166.5	^ 168.5	2 210.9
December	541.0	160.7	234.7	^ 176.6	287.2	*73.6	^ 126.8	1 600.5
2004								
March	685.0	*89.0	238.1	^ 154.4	259.2	68.6	^ 161.9	1 656.2
June	1 679.0	99.8	221.7	*340.8	300.5	^ 270.9	^ 82.6	2 995.4
September	^ 638.3	174.3	343.9	368.3	287.4	54.8	^ 151.2	2 018.3
December	^ 688.8	186.4	259.8	^ 107.2	285.4	110.9	^ 147.1	1 785.5
VALUE OF WORK DONE DURING PERIOD								
2001-02	1 752.2	607.1	920.9	433.7	1 235.9	392.8	254.9	5 597.6
2002-03	2 287.1	659.9	1 049.0	589.1	1 110.3	424.1	364.3	6 483.7
2003-04	2 989.8	914.8	1 212.4	744.2	1 073.3	463.1	490.7	7 888.2
2003								
September	^ 594.3	220.3	291.3	^ 218.5	207.6	108.8	^ 135.9	1 776.6
December	^ 684.7	218.9	298.9	^ 181.1	290.9	^ 156.4	^ 130.5	1 961.4
2004								
March	780.4	224.9	313.1	^ 165.7	267.2	109.9	^ 135.6	1 996.8
June	930.4	250.6	309.0	^ 179.0	307.6	88.0	^ 88.6	2 153.3
September	797.0	258.3	305.2	^ 176.7	292.4	115.3	^ 121.4	2 066.3
December	948.4	237.4	269.4	179.9	294.2	86.3	^ 118.1	2 133.8
VALUE OF WORK YET TO BE DONE								
2001-02	369.1	61.2	150.5	245.0	185.4	233.7	16.8	1 261.7
2002-03	2 188.9	828.7	144.9	298.3	21.3	254.4	74.9	3 811.3
2003-04	2 807.2	595.5	96.3	564.1	24.1	409.6	56.0	4 552.7
2003								
September	2 214.0	892.5	276.4	^ 361.8	27.4	309.0	94.1	4 175.2
December	2 057.1	836.6	182.5	^ 367.2	28.9	242.2	70.0	3 784.6
2004								
March	1 990.9	621.5	122.7	^ 357.3	^ 28.8	216.4	^ 88.2	3 425.7
June	2 807.2	595.5	96.3	^ 564.1	24.1	409.6	56.0	4 552.7
September	2 636.1	576.6	138.5	^ 704.4	20.8	313.2	^ 64.8	4 454.4
December	2 333.1	531.8	127.1	^ 593.9	41.9	225.9	75.8	3 929.5

^ estimate has a relative standard error of 10% to less than 25% and should be used with caution

* estimate has a relative standard error of 25% to 50% and should be used with caution

Period	Roads, highways and subdivisions	Bridges, railways and harbours	Electricity generation, transmission etc. and pipelines	Water storage and supply, sewerage and drainage	Telecom- munications	Heavy industry	Recreation and other	Total
	\$m	\$m	\$m	\$m	\$m	\$m	\$m	\$m
VALUE OF WORK COMMENCED DURING PERIOD								
2001-02	836.5	105.6	941.5	160.7	721.9	405.5	319.2	3 490.8
2002-03	1 080.0	633.5	1 123.4	274.2	684.2	675.1	416.3	4 886.8
2003-04	1 259.2	419.3	1 171.9	326.5	769.0	312.5	324.6	4 583.0
2003								
September	381.8	304.9	248.4	^ 86.6	134.9	97.4	^ 95.2	1 349.3
December	^ 272.6	**8.3	185.3	*78.2	199.3	^ 51.9	^ 77.3	872.9
2004								
March	^ 326.8	74.0	544.0	*78.2	153.7	78.6	^ 67.2	1 322.6
June	^ 277.9	32.0	194.2	^ 83.5	281.1	84.7	^ 84.9	1 038.2
September	^ 378.1	*41.1	178.5	^ 110.2	188.3	*62.8	^ 117.7	1 076.6
December	373.0	29.6	^ 212.1	^ 61.0	^ 203.9	^ 96.2	^ 138.0	1 113.8
VALUE OF WORK DONE DURING PERIOD								
2001-02	997.4	108.7	785.6	178.9	760.8	221.5	336.1	3 389.0
2002-03	1 137.3	164.1	1 144.6	176.4	726.3	493.5	402.1	4 244.3
2003-04	1 285.1	483.7	1 090.1	370.6	731.5	698.0	324.3	4 983.3
2003								
September	^ 281.2	98.2	288.8	^ 57.6	136.6	151.0	^ 83.8	1 097.2
December	^ 301.0	76.7	278.1	^ 105.2	198.9	201.0	^ 85.4	1 246.2
2004								
March	335.6	140.3	268.9	^ 98.0	170.0	187.6	^ 68.9	1 269.3
June	367.4	168.5	254.4	^ 109.8	226.1	158.4	^ 86.3	1 370.7
September	^ 340.3	116.8	239.1	^ 102.3	200.6	112.1	^ 98.1	1 209.3
December	392.7	171.5	271.0	^ 93.0	222.3	95.9	^ 122.7	1 369.1
VALUE OF WORK YET TO BE DONE								
2001-02	284.8	35.0	385.4	55.1	150.4	359.0	22.8	1 292.4
2002-03	295.5	515.8	413.0	123.8	18.3	545.8	3.7	1 916.0
2003-04	291.7	512.1	549.3	78.2	57.7	157.3	12.2	1 658.7
2003								
September	367.8	743.9	385.2	145.6	4.5	580.7	^ 18.7	2 246.4
December	^ 353.3	691.4	313.6	^ 132.6	5.1	465.8	^ 14.5	1 976.5
2004								
March	^ 378.6	620.3	631.5	88.2	**29.6	364.1	^ 11.5	2 123.7
June	^ 291.7	512.1	549.3	78.2	57.7	157.3	^ 12.2	1 658.7
September	^ 379.0	551.9	401.5	81.5	44.8	^ 125.5	*11.0	1 595.1
December	^ 368.7	459.4	332.7	68.8	^ 81.2	^ 134.4	*21.4	1 466.6

^ estimate has a relative standard error of 10% to less than 25% and should be used with caution

* estimate has a relative standard error of 25% to 50% and should be used with caution

** estimate has a relative standard error greater than 50% and is considered too unreliable for general use

Period	Roads, highways and subdivisions	Bridges, railways and harbours	Electricity generation, transmission etc. and pipelines	Water storage and supply, sewerage and drainage	Telecom- munications	Heavy industry	Recreation and other	Total
	\$m	\$m	\$m	\$m	\$m	\$m	\$m	\$m
VALUE OF WORK COMMENCED DURING PERIOD								
2001-02	1 127.3	324.1	508.2	540.8	601.5	1 613.5	356.0	5 071.5
2002-03	1 485.9	344.5	530.1	532.7	553.8	1 578.7	536.4	5 562.2
2003-04	1 730.6	359.9	794.8	971.4	528.1	1 117.0	455.6	5 957.5
2003								
September	^ 608.9	^ 70.6	395.5	^ 420.5	102.4	^ 153.6	*111.3	1 862.7
December	^ 374.3	*61.8	102.9	^ 313.0	141.9	188.3	*111.9	1 294.0
2004								
March	357.1	^ 52.5	121.0	*163.1	119.9	^ 158.4	^ 107.5	1 079.5
June	^ 390.4	174.9	^ 175.4	*74.8	164.0	616.8	^ 124.9	1 721.3
September	^ 733.3	^ 103.9	1 261.3	^ 403.7	148.0	*209.7	^ 196.2	3 056.1
December	^ 527.1	^ 51.9	267.0	^ 108.4	147.3	^ 695.7	^ 164.9	1 962.2
VALUE OF WORK DONE								
2001-02	1 122.0	349.4	1 126.1	405.3	623.0	650.6	351.1	4 627.5
2002-03	1 411.1	346.8	734.9	386.0	563.8	1 641.4	474.8	5 558.8
2003-04	1 722.0	319.2	845.8	549.7	527.0	1 105.0	471.3	5 539.9
2003								
September	^ 413.5	94.6	187.3	^ 124.3	101.3	197.4	*113.4	1 231.7
December	^ 446.3	^ 81.0	202.8	^ 136.8	141.5	356.0	*119.2	1 483.5
2004								
March	359.9	^ 68.9	187.5	^ 143.9	120.8	^ 243.5	^ 109.8	1 234.4
June	^ 502.3	74.7	268.2	144.7	163.4	308.2	^ 129.0	1 590.4
September	544.2	118.3	292.1	^ 176.0	146.6	^ 290.8	^ 116.5	1 684.4
December	497.4	128.7	300.5	193.8	151.5	364.7	^ 141.2	1 777.9
VALUE OF WORK YET TO BE DONE								
2001-02	335.3	325.5	443.6	363.1	33.2	1 201.0	30.8	2 732.5
2002-03	367.6	299.9	249.5	250.0	19.0	691.4	35.8	1 913.2
2003-04	451.7	341.1	180.6	373.0	21.3	895.7	59.8	2 323.3
2003								
September	^ 542.4	283.1	396.8	*502.6	19.6	675.8	^ 34.7	2 455.0
December	457.7	245.7	313.6	*714.0	^ 26.9	488.5	40.5	2 286.8
2004								
March	462.7	229.8	246.0	*740.8	^ 23.5	435.3	^ 68.7	^ 2 206.9
June	451.7	341.1	^ 180.6	*373.0	21.3	^ 895.7	59.8	2 323.3
September	^ 632.2	296.4	1 143.6	^ 420.1	22.7	757.4	*107.7	3 380.1
December	^ 647.8	228.7	1 098.9	^ 353.9	22.5	^ 1 135.0	^ 138.7	3 625.5

^ estimate has a relative standard error of 10% to less than 25% and should be used with caution

* estimate has a relative standard error of 25% to 50% and should be used with caution

Period	Roads, highways and subdivisions	Bridges, railways and harbours	Electricity generation, transmission etc. and pipelines	Water storage and supply, sewerage and drainage	Telecom- munications	Heavy industry	Recreation and other	Total
	\$m	\$m	\$m	\$m	\$m	\$m	\$m	\$m
VALUE OF WORK COMMENCED DURING PERIOD								
2001-02	394.2	15.7	434.6	63.7	229.0	372.4	118.8	1 628.5
2002-03	454.6	20.8	332.5	101.4	224.8	343.0	114.0	1 591.2
2003-04	371.2	30.5	258.3	100.8	151.2	433.8	150.6	1 496.5
2003								
September	^ 77.5	8.1	66.8	^ 39.4	24.5	121.7	^ 31.1	369.0
December	^ 87.2	7.7	113.0	*22.0	41.4	*26.3	^ 31.0	328.6
2004								
March	94.4	6.7	29.7	^ 10.8	42.5	82.5	*48.7	315.4
June	^ 112.1	^ 8.1	48.9	^ 28.5	42.8	203.3	*39.8	483.5
September	^ 112.2	4.4	41.7	^ 69.1	52.9	110.3	*37.3	427.9
December	116.4	4.4	74.2	*22.1	50.6	41.1	*43.6	352.4
VALUE OF WORK DONE DURING PERIOD								
2001-02	370.8	17.3	247.1	90.7	269.3	302.3	120.0	1 417.4
2002-03	399.5	12.6	442.5	96.1	240.9	462.9	111.9	1 766.4
2003-04	369.1	38.5	350.6	145.7	152.0	581.4	127.4	1 764.7
2003								
September	^ 63.5	7.6	117.0	^ 34.6	24.9	170.4	^ 21.8	439.8
December	80.4	8.7	86.4	^ 33.8	41.8	154.4	^ 33.6	439.2
2004								
March	104.3	12.5	74.1	^ 33.3	42.5	100.5	^ 31.4	398.7
June	121.0	^ 9.6	72.9	^ 44.0	42.9	156.1	^ 40.6	487.1
September	^ 83.2	^ 9.1	51.4	^ 23.9	52.1	128.0	*31.8	379.5
December	118.6	8.7	70.0	22.0	51.4	91.4	*37.3	399.4
VALUE OF WORK YET TO BE DONE								
2001-02	33.3	10.3	235.8	12.9	35.2	273.0	5.5	606.1
2002-03	61.7	8.9	166.0	47.1	21.9	285.9	10.2	601.8
2003-04	69.9	11.3	103.3	38.7	0.1	81.4	13.9	318.7
2003								
September	71.0	6.9	116.9	46.6	1.1	242.2	^ 13.3	498.1
December	^ 82.6	5.4	151.0	41.8	0.1	101.2	8.7	390.9
2004								
March	74.2	14.8	155.5	28.2	0.2	21.2	**31.9	326.0
June	^ 69.9	11.3	103.3	^ 38.7	0.1	81.4	**13.9	318.7
September	^ 107.7	**16.3	91.8	^ 60.5	^ 2.3	60.3	*2.0	341.0
December	^ 98.3	*14.3	94.5	^ 44.8	^ 2.2	40.4	*6.1	300.5

^ estimate has a relative standard error of 10% to less than 25% and should be used with caution

* estimate has a relative standard error of 25% to 50% and should be used with caution

** estimate has a relative standard error greater than 50% and is considered too unreliable for general use

Period	Roads, highways and subdivisions	Bridges, railways and harbours	Electricity generation, transmission etc. and pipelines	Water storage and supply, sewerage and drainage	Telecom- munications	Heavy industry	Recreation and other	Total
	\$m	\$m	\$m	\$m	\$m	\$m	\$m	\$m
VALUE OF WORK COMMENCED DURING PERIOD								
2001-02	672.4	170.3	1 202.4	92.3	354.7	1 969.8	220.3	4 682.1
2002-03	817.8	411.8	206.9	284.0	333.0	2 372.6	194.5	4 620.7
2003-04	985.6	1 619.7	256.4	234.4	333.6	1 252.3	189.3	4 871.2
2003								
September	^ 300.4	66.5	112.9	^ 60.1	55.2	176.2	^ 48.1	819.3
December	^ 259.9	26.6	40.7	^ 52.7	95.2	381.3	^ 40.4	896.9
2004								
March	^ 220.4	1 480.1	^ 63.0	^ 46.0	83.4	509.3	*60.3	2 462.5
June	^ 205.0	^ 46.4	^ 39.9	*75.5	99.8	185.5	^ 40.4	692.5
September	^ 354.5	^ 66.6	294.5	*97.0	^ 69.5	1 749.3	^ 63.5	2 694.9
December	^ 197.3	198.5	^ 125.0	*66.7	83.4	621.0	^ 121.7	1 413.6
VALUE OF WORK DONE DURING PERIOD								
2001-02	708.7	171.9	314.8	136.5	408.4	1 126.6	252.3	3 119.3
2002-03	855.7	331.0	668.0	250.3	365.2	2 060.5	204.6	4 735.3
2003-04	1 004.3	371.3	683.9	302.6	334.3	1 989.7	194.5	4 880.6
2003								
September	^ 214.4	58.9	188.4	^ 64.2	58.2	530.9	^ 41.3	1 156.4
December	^ 263.8	57.1	185.4	^ 71.1	95.7	530.6	^ 39.9	1 243.4
2004								
March	^ 241.7	82.8	162.2	^ 70.6	84.6	452.8	*54.1	1 148.9
June	284.4	172.6	^ 148.0	*96.7	95.8	475.3	*59.1	1 331.9
September	^ 225.6	222.4	113.3	*92.4	70.9	563.9	*61.9	1 350.3
December	242.4	301.5	137.2	*92.8	81.4	484.7	^ 95.6	1 435.6
VALUE OF WORK YET TO BE DONE								
2001-02	193.4	46.1	948.2	22.5	97.0	1 219.7	19.9	2 546.7
2002-03	171.3	121.6	483.2	93.8	20.0	1 486.7	11.0	2 387.6
2003-04	235.5	1 413.0	163.1	59.3	26.4	878.0	27.7	2 803.1
2003								
September	271.8	114.4	415.4	^ 74.8	16.4	1 232.5	13.7	2 139.1
December	248.6	128.0	300.1	^ 86.9	19.9	1 080.1	^ 14.9	1 878.6
2004								
March	253.3	1 510.0	223.3	51.8	18.6	1 164.7	^ 29.7	3 251.3
June	^ 235.5	1 413.0	163.1	*59.3	26.4	878.0	*27.7	2 803.1
September	^ 327.8	1 249.9	299.7	*56.1	17.5	2 076.1	^ 31.8	4 058.9
December	242.2	1 173.2	273.2	^ 47.2	25.3	2 384.0	^ 64.1	4 209.1

^ estimate has a relative standard error of 10% to less than 25% and should be used with caution

* estimate has a relative standard error of 25% to 50% and should be used with caution

Period	Roads, highways and subdivisions	Bridges, railways and harbours	Electricity generation, transmission etc. and pipelines	Water storage and supply, sewerage and drainage	Telecom- munications	Heavy industry	Recreation and other	Total
	\$m	\$m	\$m	\$m	\$m	\$m	\$m	\$m
VALUE OF WORK COMMENCED DURING PERIOD								
2001-02	83.8	20.8	254.2	34.2	72.7	4.5	14.1	484.3
2002-03	97.4	15.3	83.9	39.2	48.2	4.4	17.4	305.7
2003-04	111.9	14.1	474.4	51.2	34.0	11.0	25.1	721.7
2003								
September	^ 24.8	3.4	31.9	^ 19.3	6.1	*1.0	^ 8.1	94.8
December	25.9	4.8	18.4	^ 12.8	8.4	0.1	^ 5.3	75.7
2004								
March	34.0	4.3	397.0	^ 8.4	6.7	*6.1	*7.8	464.3
June	^ 27.2	^ 1.6	27.1	^ 10.7	12.8	**3.8	*3.8	86.9
September	32.6	^ 1.8	26.2	*13.7	10.3	**2.6	^ 11.4	98.5
December	49.5	*2.6	50.3	^ 8.3	10.4	^ 30.6	^ 9.6	161.2
VALUE OF WORK DONE DURING PERIOD								
2001-02	83.3	18.6	252.8	23.4	58.3	3.7	13.7	453.8
2002-03	95.9	20.8	133.1	41.4	51.7	2.8	18.3	364.0
2003-04	108.7	14.2	244.7	48.8	33.8	10.3	24.9	485.5
2003								
September	19.2	2.6	26.2	^ 15.5	6.1	^ 0.5	^ 5.3	75.5
December	26.7	4.8	59.0	^ 12.8	8.3	*0.6	^ 5.4	117.5
2004								
March	32.8	^ 3.1	62.0	^ 9.3	6.9	*5.2	*7.2	126.5
June	^ 30.1	3.7	97.4	^ 11.2	12.4	*4.1	*7.1	166.0
September	19.6	2.7	87.1	^ 8.0	10.3	*2.9	*9.1	139.7
December	27.7	*2.9	68.5	^ 6.6	10.4	*6.7	^ 5.0	127.7
VALUE OF WORK YET TO BE DONE								
2001-02	7.7	6.5	31.7	12.6	4.6	0.5	1.0	64.6
2002-03	6.6	1.1	13.1	6.0	0.3	1.2	0.9	29.1
2003-04	7.3	2.1	316.6	5.0	0.5	0.4	0.9	332.8
2003								
September	^ 12.2	2.7	80.2	^ 9.3	—	^ 1.3	^ 5.5	111.4
December	^ 11.8	4.0	53.6	^ 9.3	0.4	*0.2	^ 4.1	83.3
2004								
March	^ 16.0	5.7	384.8	^ 5.0	0.1	2.7	^ 2.8	417.1
June	^ 7.3	2.1	316.6	^ 5.0	0.5	0.4	^ 0.9	332.8
September	20.7	1.8	258.6	*10.6	—	**1.6	^ 2.9	296.3
December	39.6	^ 1.4	144.3	*11.5	—	^ 25.5	^ 6.8	229.1

^ estimate has a relative standard error of 10% to less than 25% and should be used with caution

** estimate has a relative standard error greater than 50% and is considered too unreliable for general use

* estimate has a relative standard error of 25% to 50% and should be used with caution

— nil or rounded to zero (including null cells)

Period	Roads, highways and subdivisions	Bridges, railways and harbours	Electricity generation, transmission etc. and pipelines	Water storage and supply, sewerage and drainage	Telecom- munications	Heavy industry	Recreation and other	Total
	\$m	\$m	\$m	\$m	\$m	\$m	\$m	\$m
VALUE OF WORK COMMENCED DURING PERIOD								
2001-02	95.2	621.3	13.4	72.1	48.1	1 363.0	14.3	2 227.4
2002-03	55.7	50.1	16.5	14.0	44.7	1 690.1	9.0	1 880.2
2003-04	96.6	27.3	699.1	23.7	78.3	89.4	11.8	1 026.2
2003								
September	17.2	7.5	685.9	*7.3	19.9	11.9	*1.4	751.0
December	^ 18.4	*12.9	*5.1	*4.1	22.4	11.3	^ 2.1	76.3
2004								
March	^ 16.2	*2.7	*4.0	*4.6	17.3	58.1	**5.6	108.6
June	44.7	4.3	4.1	*7.7	18.6	8.1	2.7	90.2
September	18.1	2.5	11.5	*6.3	14.6	130.9	^ 2.1	185.9
December	23.6	4.3	^ 9.1	**11.4	12.2	32.8	^ 1.8	95.2
VALUE OF WORK DONE DURING PERIOD								
2001-02	67.4	238.7	8.0	38.1	56.1	807.6	10.8	1 226.7
2002-03	66.1	360.1	18.2	46.7	51.9	779.6	8.9	1 331.6
2003-04	72.7	77.6	524.1	23.7	81.6	830.8	9.3	1 619.8
2003								
September	^ 14.5	^ 33.6	122.3	*7.4	22.4	211.4	*1.2	412.7
December	24.2	^ 27.7	134.8	*4.9	22.4	209.8	*1.6	425.3
2004								
March	12.2	^ 9.6	128.1	*4.2	18.1	192.1	**3.8	368.2
June	21.8	6.7	138.9	*7.2	18.6	217.6	^ 2.6	413.5
September	21.9	10.1	61.4	*7.9	16.2	224.0	^ 2.9	344.4
December	^ 31.1	4.8	59.2	**7.1	14.4	214.7	^ 1.5	332.7
VALUE OF WORK YET TO BE DONE								
2001-02	29.0	383.0	6.0	33.2	25.6	563.4	3.8	1 044.0
2002-03	5.8	69.3	11.2	3.7	18.2	1 737.8	3.3	1 849.3
2003-04	33.8	12.4	185.4	2.7	18.5	1 106.8	0.7	1 360.5
2003								
September	11.4	40.2	574.8	^ 3.8	15.5	1 629.2	3.4	2 278.3
December	6.2	23.5	445.1	1.8	19.3	1 457.3	^ 3.7	1 956.9
2004								
March	^ 10.2	14.7	320.6	2.3	18.5	1 317.8	**13.8	1 697.9
June	33.8	12.4	185.4	2.7	18.5	1 106.8	0.7	1 360.5
September	28.9	5.4	127.3	1.5	16.9	1 028.9	2.3	1 211.2
December	24.2	4.8	^ 11.9	^ 7.2	19.1	653.2	^ 0.5	720.9

^ estimate has a relative standard error of 10% to less than 25% and should be used with caution

* estimate has a relative standard error of 25% to 50% and should be used with caution

** estimate has a relative standard error greater than 50% and is considered too unreliable for general use

Period	Roads, highways and subdivisions	Bridges, railways and harbours	Electricity generation, transmission etc. and pipelines	Water storage and supply, sewerage and drainage	Telecom- munications	Heavy industry	Recreation and other	Total
	\$m	\$m	\$m	\$m	\$m	\$m	\$m	\$m
VALUE OF WORK COMMENCED DURING PERIOD								
2001-02	85.9	2.2	9.1	19.9	55.0	—	35.8	207.9
2002-03	63.9	2.3	32.2	22.0	48.2	0.3	54.7	223.5
2003-04	96.9	0.3	28.9	59.1	62.0	0.8	19.3	267.4
2003								
September	*8.0	—	6.2	3.7	14.9	0.1	^ 8.4	41.4
December	*34.2	—	6.5	7.3	16.0	—	*3.7	^ 67.7
2004								
March	^ 20.7	0.1	6.8	36.6	^ 16.6	0.6	^ 2.6	84.1
June	33.9	0.3	9.4	11.5	14.4	0.1	^ 4.6	74.2
September	13.8	^ 0.2	12.0	12.5	17.5	—	^ 5.3	61.3
December	9.1	0.1	9.0	9.6	18.8	0.1	^ 5.5	52.1
VALUE OF WORK DONE DURING PERIOD								
2001-02	77.9	1.9	14.0	15.8	55.5	—	34.8	199.9
2002-03	71.6	2.3	41.9	21.8	51.2	0.2	55.8	244.7
2003-04	85.0	0.4	29.0	48.9	62.4	0.5	18.7	244.9
2003								
September	^ 19.1	0.1	6.2	3.9	15.3	0.1	^ 8.3	53.0
December	^ 27.9	—	6.5	7.3	16.0	—	*4.1	61.9
2004								
March	^ 18.0	0.1	6.9	16.5	^ 16.6	0.3	^ 2.2	60.6
June	19.9	0.2	9.4	21.2	14.4	0.1	^ 4.2	69.4
September	^ 21.4	^ 0.2	12.1	18.6	17.5	—	*4.4	74.1
December	13.7	—	8.8	12.6	18.8	0.1	*4.3	58.3
VALUE OF WORK YET TO BE DONE								
2001-02	23.0	—	2.2	1.0	0.1	—	4.4	30.6
2002-03	20.2	0.1	1.7	0.6	0.8	0.4	2.2	26.1
2003-04	30.7	0.1	—	9.5	—	—	0.5	40.8
2003								
September	10.2	—	—	0.2	0.4	—	*1.4	12.2
December	*18.5	—	—	0.2	—	—	**0.5	*19.2
2004								
March	7.3	—	—	20.3	—	0.9	**0.6	29.2
June	30.7	0.1	—	9.5	—	—	0.5	40.8
September	*33.5	^ 0.1	—	3.8	—	—	1.2	^ 38.7
December	7.0	—	0.2	^ 0.8	0.1	0.1	2.4	10.5

^ estimate has a relative standard error of 10% to less than 25% and should be used with caution

* estimate has a relative standard error of 25% to 50% and should be used with caution

** estimate has a relative standard error greater than 50% and is considered too unreliable for general use

— nil or rounded to zero (including null cells)

<i>Period</i>	NSW \$m	Vic. \$m	Qld \$m	SA \$m	WA \$m	Tas. \$m	NT \$m	ACT \$m	Aust. \$m
BY THE PRIVATE SECTOR FOR THE PRIVATE SECTOR									
2001-02	1 290.4	1 924.5	1 698.3	770.5	1 807.6	236.0	1 080.1	91.6	8 899.0
2002-03	1 839.9	2 813.3	2 725.6	1 075.3	3 427.5	108.1	1 185.4	107.9	13 283.0
2003-04	3 026.6	3 369.3	2 755.7	1 195.9	3 782.3	164.5	1 429.3	113.5	15 837.1
2003									
September	^ 684.9	788.6	567.2	345.2	968.9	^ 15.0	370.0	27.0	3 766.8
December	^ 781.8	895.8	774.7	313.4	988.8	16.6	367.5	^ 28.4	4 166.9
2004									
March	853.5	867.7	609.1	250.2	846.4	51.8	328.5	^ 29.1	3 836.4
June	706.4	817.2	804.7	287.1	978.2	81.0	363.3	29.0	4 067.0
September	806.6	802.1	826.0	253.7	1 063.1	76.5	292.9	^ 33.4	4 154.5
December	965.7	909.7	867.4	225.0	1 110.5	49.4	291.4	25.4	4 444.4
BY THE PRIVATE SECTOR FOR THE PUBLIC SECTOR									
2001-02	1 267.2	777.9	714.5	186.4	666.0	74.8	87.3	57.8	3 831.7
2002-03	1 351.0	793.4	674.1	248.5	686.8	96.4	101.6	91.0	4 042.8
2003-04	1 572.7	940.7	612.0	231.6	473.5	90.7	124.9	95.0	4 141.1
2003									
September	379.8	192.5	^ 150.6	^ 49.6	^ 88.9	14.9	^ 33.1	18.9	928.4
December	403.6	181.6	^ 141.8	48.9	91.4	26.4	^ 36.0	23.9	953.5
2004									
March	360.6	253.6	^ 143.1	56.2	143.7	26.7	^ 25.0	24.2	1 033.1
June	428.8	313.0	176.5	76.9	^ 149.4	22.8	30.8	28.0	1 226.2
September	414.3	^ 247.9	254.8	^ 53.0	^ 155.5	20.4	37.5	30.1	1 213.5
December	405.2	^ 280.9	280.7	69.5	^ 159.5	30.4	29.0	23.4	1 278.6
TOTAL BY THE PRIVATE SECTOR									
2001-02	2 557.6	2 702.4	2 412.8	956.9	2 473.6	310.7	1 167.4	149.4	12 730.7
2002-03	3 190.9	3 606.7	3 399.7	1 323.8	4 114.2	204.6	1 286.9	199.0	17 325.9
2003-04	4 599.3	4 310.0	3 367.7	1 427.5	4 255.8	255.2	1 554.1	208.5	19 978.1
2003									
September	^ 1 064.7	981.1	717.8	394.8	1 057.8	30.0	403.1	45.8	4 695.1
December	1 185.4	1 077.4	916.4	362.3	1 080.2	42.9	403.5	^ 52.4	5 120.4
2004									
March	1 214.1	1 121.3	752.2	306.4	990.2	78.5	353.5	53.3	4 869.5
June	1 135.2	1 130.2	981.2	364.0	1 127.6	103.8	394.1	57.0	5 293.1
September	1 220.9	1 050.1	1 080.8	306.6	1 218.6	97.0	330.4	63.5	5 368.0
December	1 370.9	1 190.6	1 148.1	294.5	1 270.0	79.8	320.4	48.8	5 723.0

^ estimate has a relative standard error of 10% to less than 25% and should be used with caution

<i>Period</i>	<i>NSW</i>	<i>Vic.</i>	<i>Qld</i>	<i>SA</i>	<i>WA</i>	<i>Tas.</i>	<i>NT</i>	<i>ACT</i>	<i>Aust.</i>
	\$m	\$m	\$m	\$m	\$m	\$m	\$m	\$m	\$m
TOTAL BY COMMONWEALTH GOVERNMENT									
2001-02	960.6	565.6	574.5	216.0	307.0	49.3	45.4	50.5	2 768.9
2002-03	867.1	508.8	511.5	201.5	286.4	44.3	42.3	45.7	2 507.6
2003-04	692.9	539.9	436.5	105.9	263.9	33.1	62.0	36.4	2 170.7
2003									
September	135.6	96.3	83.7	11.8	41.0	6.1	9.3	7.1	391.0
December	182.0	142.9	117.6	29.9	79.4	8.1	20.6	9.5	590.0
2004									
March	139.7	109.1	88.0	28.6	60.0	6.6	14.3	7.4	453.7
June	235.6	191.6	147.2	35.6	83.5	12.2	17.8	12.4	736.0
September	201.9	136.5	121.5	41.7	51.8	10.3	12.7	10.6	587.0
December	180.3	129.6	113.9	38.6	58.2	9.5	10.5	9.5	550.0
TOTAL BY STATE AND TERRITORY GOVERNMENT									
2001-02	1 550.5	35.0	1 028.3	120.7	98.0	49.2	8.2	—	2 889.9
2002-03	1 874.7	38.7	997.2	112.1	116.8	65.0	0.6	—	3 205.1
2003-04	2 086.5	21.7	995.1	128.5	125.4	135.6	—	—	3 492.8
2003									
September	466.3	6.9	250.4	17.3	30.2	23.4	—	—	794.4
December	477.0	3.2	253.3	24.6	30.0	50.3	—	—	838.4
2004									
March	508.6	4.3	218.9	36.5	27.3	28.3	—	—	823.8
June	634.7	7.4	272.5	50.1	37.9	33.7	—	—	1 036.2
September	503.9	5.5	296.2	15.6	40.2	21.3	—	—	882.6
December	437.5	12.3	341.5	44.5	36.2	21.2	—	—	893.2
BY LOCAL GOVERNMENT AUTHORITIES									
2001-02	528.9	86.1	612.0	123.8	240.6	44.7	5.7	—	1 641.8
2002-03	551.0	90.0	650.4	129.0	217.9	50.2	1.7	—	1 690.3
2003-04	509.4	111.6	740.7	102.8	235.5	61.6	3.6	—	1 765.3
2003									
September	110.1	12.9	179.9	^ 15.9	^ 27.3	^ 16.0	0.3	—	362.3
December	117.1	*22.7	196.1	22.4	^ 53.7	16.2	1.3	—	429.6
2004									
March	134.4	^ 34.6	^ 175.3	^ 27.1	^ 71.5	^ 13.1	0.4	—	456.4
June	147.8	*41.5	^ 189.5	^ 37.3	^ 83.0	^ 16.3	^ 1.6	—	517.0
September	^ 139.7	17.2	185.9	^ 15.6	^ 39.7	^ 11.1	^ 1.2	—	410.4
December	145.2	^ 36.6	^ 174.4	^ 21.8	^ 71.3	17.1	^ 1.9	—	468.2
TOTAL BY THE PUBLIC SECTOR									
2001-02	3 040.0	686.7	2 214.8	460.6	645.7	143.1	59.3	50.5	7 300.6
2002-03	3 292.8	637.6	2 159.1	442.6	621.1	159.4	44.7	45.7	7 402.9
2003-04	3 288.9	673.3	2 172.2	337.3	624.8	230.3	65.6	36.4	7 428.8
2003									
September	711.9	116.0	513.9	45.0	98.5	45.5	9.6	7.1	1 547.7
December	776.1	168.8	567.0	77.0	163.2	74.6	21.9	9.5	1 858.0
2004									
March	782.8	147.9	482.1	92.2	158.8	48.0	14.7	7.4	1 733.8
June	1 018.1	240.5	609.2	123.1	204.3	62.2	19.4	12.4	2 289.2
September	845.4	159.2	603.6	72.9	131.7	42.7	14.0	10.6	1 880.0
December	762.9	178.5	629.8	104.9	165.7	47.8	12.4	9.5	1 911.5

^ estimate has a relative standard error of 10% to less than 25% and should be used with caution

* estimate has a relative standard error of 25% to 50% and should be used with caution

— nil or rounded to zero (including null cells)

(a) Includes construction work done by public sector organisations with their own workforce only. All work contracted out by public sector organisations to the private sector appears in 'By private for public sector' totals.

<i>Period</i>	<i>NSW</i>	<i>Vic.</i>	<i>Qld</i>	<i>SA</i>	<i>WA</i>	<i>Tas.</i>	<i>NT</i>	<i>ACT</i>	<i>Aust.</i>
	\$m	\$m	\$m	\$m	\$m	\$m	\$m	\$m	\$m
BY THE PRIVATE SECTOR FOR THE PUBLIC SECTOR									
2001-02	1 267.2	777.9	714.5	186.4	666.0	74.8	87.3	57.8	3 831.7
2002-03	1 351.0	793.4	674.1	248.5	686.8	96.4	101.6	91.0	4 042.8
2003-04	1 572.7	940.7	612.0	231.6	473.5	90.7	124.9	95.0	4 141.1
2003									
September	379.8	192.5	^ 150.6	^ 49.6	^ 88.9	14.9	^ 33.1	18.9	928.4
December	403.6	181.6	^ 141.8	48.9	91.4	26.4	^ 36.0	23.9	953.5
2004									
March	360.6	253.6	^ 143.1	56.2	143.7	26.7	^ 25.0	24.2	1 033.1
June	428.8	313.0	176.5	76.9	^ 149.4	22.8	30.8	28.0	1 226.2
September	414.3	^ 247.9	254.8	^ 53.0	^ 155.5	20.4	37.5	30.1	1 213.5
December	405.2	^ 280.9	280.7	69.5	^ 159.5	30.4	29.0	23.4	1 278.6
TOTAL BY THE PUBLIC SECTOR									
2001-02	3 040.0	686.7	2 214.8	460.6	645.7	143.1	59.3	50.5	7 300.6
2002-03	3 292.8	637.6	2 159.1	442.6	621.1	159.4	44.7	45.7	7 402.9
2003-04	3 288.9	673.3	2 172.2	337.3	624.8	230.3	65.6	36.4	7 428.8
2003									
September	711.9	116.0	513.9	45.0	98.5	45.5	9.6	7.1	1 547.7
December	776.1	168.8	567.0	77.0	163.2	74.6	21.9	9.5	1 858.0
2004									
March	782.8	147.9	482.1	92.2	158.8	48.0	14.7	7.4	1 733.8
June	1 018.1	240.5	609.2	123.1	204.3	62.2	19.4	12.4	2 289.2
September	845.4	159.2	603.6	72.9	131.7	42.7	14.0	10.6	1 880.0
December	762.9	178.5	629.8	104.9	165.7	47.8	12.4	9.5	1 911.5
TOTAL FOR THE PUBLIC SECTOR									
2001-02	4 307.2	1 464.5	2 929.3	646.9	1 311.7	217.9	146.6	108.3	11 132.3
2002-03	4 643.8	1 430.9	2 833.2	691.1	1 307.9	255.9	146.2	136.7	11 445.8
2003-04	4 861.6	1 614.0	2 784.2	568.8	1 098.3	321.1	190.5	131.4	11 569.9
2003									
September	1 091.7	308.5	664.5	94.6	187.5	60.5	^ 42.7	26.0	2 476.1
December	1 179.6	350.4	708.8	125.8	254.6	100.9	57.9	33.4	2 811.5
2004									
March	1 143.3	401.5	625.2	148.4	302.5	74.6	39.7	31.6	2 766.9
June	1 446.9	553.5	785.7	199.9	353.7	85.0	50.2	40.4	3 515.4
September	1 259.6	407.1	858.4	125.8	287.2	63.1	51.5	40.7	3 093.5
December	1 168.1	459.4	910.5	174.4	325.2	78.2	41.3	32.9	3 190.0

^ estimate has a relative standard error of 10% to less than 25% and should be used with caution

BY THE PRIVATE SECTOR

	For the private sector	For the public sector	Total	By the public sector	Total for the public sector(a)	Total
	%	%	%	%	%	%
VALUE OF WORK COMMENCED						
Roads, highways and subdivisions	9.6	9.0	6.5	16.0	9.3	6.5
Bridges	33.0	19.8	18.2	9.2	9.8	10.9
Railways	4.0	2.2	3.0	—	0.5	1.7
Harbours	0.5	9.1	1.4	28.0	13.2	3.1
Water storage and supply	19.2	13.6	14.4	23.1	14.0	12.2
Sewerage and drainage	18.4	26.5	18.4	18.5	15.3	13.1
Electricity generation, transmission and distribution	15.6	12.5	12.3	—	1.9	5.3
Pipelines	14.1	30.0	13.5	—	25.2	13.4
Recreation	12.9	28.8	12.0	16.0	15.5	10.7
Telecommunications	9.5	54.8	9.4	—	0.8	3.0
Oil, gas, coal and other minerals	9.4	—	9.1	—	—	9.1
Other heavy industry	23.6	—	23.6	—	—	23.5
Other	14.1	27.3	13.4	6.3	24.1	13.2
<i>Total</i>	4.6	6.3	3.9	4.8	3.8	3.1

VALUE OF WORK DONE

Roads, highways and subdivisions	5.6	5.2	4.1	3.9	3.4	3.4
Bridges	21.1	11.0	10.0	6.9	7.8	7.7
Railways	1.0	0.7	0.6	—	0.4	0.4
Harbours	5.6	16.5	5.4	21.3	13.4	5.3
Water storage and supply	16.4	11.1	9.8	17.7	9.5	8.6
Sewerage and drainage	12.5	13.3	10.5	9.1	9.3	8.2
Electricity generation, transmission and distribution	1.7	14.1	3.0	—	2.0	1.5
Pipelines	4.2	33.7	4.2	—	14.5	4.2
Recreation	11.2	31.4	10.4	13.3	15.3	9.3
Telecommunications	3.6	14.1	3.6	0.1	0.7	1.2
Oil, gas, coal and other minerals	2.4	—	2.4	—	—	2.4
Other heavy industry	9.7	—	9.7	—	—	9.6
Other	17.0	37.9	16.6	4.7	33.7	16.3
<i>Total</i>	2.1	3.7	1.8	1.4	1.7	1.4

VALUE OF WORK YET TO BE DONE

Roads, highways and subdivisions	3.4	7.3	3.1	15.3	7.4	3.4
Bridges	9.4	12.4	11.3	5.7	10.7	9.9
Railways	0.3	—	0.1	—	—	0.1
Harbours	2.5	1.1	2.4	32.0	2.0	2.4
Water storage and supply	8.6	14.1	12.1	26.3	12.6	11.2
Sewerage and drainage	7.9	2.7	2.6	17.2	7.4	6.9
Electricity generation, transmission and distribution	0.6	0.6	0.4	—	0.5	0.4
Pipelines	25.4	34.6	23.2	—	32.5	23.1
Recreation	12.9	29.8	11.8	26.8	22.3	13.2
Telecommunications	11.9	0.2	4.9	41.9	0.5	4.9
Oil, gas, coal and other minerals	4.2	—	4.2	—	—	4.2
Other heavy industry	6.7	—	6.7	—	—	6.6
Other	13.0	23.5	13.6	9.3	22.2	13.5
<i>Total</i>	2.3	2.6	1.8	9.1	2.9	1.8

— nil or rounded to zero (including null cells)

(a) Includes work done by the private sector for the public sector and work done by the public sector.

RELATIVE STANDARD ERRORS, States and territories—By type of work

	<i>Roads, highways and subdivisions</i>	<i>Bridges, railways and harbours</i>	<i>Electricity generation, transmission etc. and pipelines</i>	<i>Water storage and supply, sewerage and drainage</i>	<i>Telecom- munications</i>	<i>Heavy industry</i>	<i>Recreation and other</i>	Total
	%	%	%	%	%	%	%	%
VALUE OF WORK COMMENCED								
NSW	13.9	3.4	4.1	19.9	—	2.7	16.2	5.8
Vic.	8.7	6.0	20.4	22.0	11.6	14.1	21.5	6.2
Qld	14.5	11.3	1.4	12.0	—	20.7	20.5	8.6
SA	7.9	6.3	1.1	45.6	—	8.1	38.8	7.2
WA	11.1	0.2	17.0	27.7	7.1	1.0	19.7	3.1
Tas.	1.7	29.7	0.2	18.8	6.5	18.2	11.8	4.0
NT	7.8	0.7	21.7	55.0	0.3	0.1	15.4	7.4
ACT	—	—	—	2.2	—	—	22.3	2.4
Aust.	6.5	1.8	4.9	9.1	3.0	8.9	9.3	3.1
VALUE OF WORK DONE								
NSW	4.6	2.1	3.3	9.2	—	3.4	16.6	2.6
Vic.	9.5	2.1	2.3	14.5	3.9	8.8	18.8	3.5
Qld	9.8	9.3	3.7	9.7	—	8.0	14.8	3.8
SA	8.7	7.2	1.1	6.4	1.2	0.5	30.1	3.9
WA	6.1	1.0	5.1	25.5	7.3	1.9	22.7	2.9
Tas.	3.2	26.7	0.1	15.2	6.5	31.5	22.6	2.2
NT	16.1	2.9	0.3	87.8	0.2	—	16.1	2.4
ACT	—	—	—	0.3	—	—	28.8	2.1
Aust.	3.4	1.6	1.4	6.2	1.2	2.4	8.4	1.4
VALUE OF WORK YET TO BE DONE								
NSW	4.0	0.6	5.1	11.0	—	—	9.9	3.3
Vic.	10.0	4.0	1.3	5.4	11.5	10.7	28.5	3.0
Qld	12.2	3.8	—	10.2	1.7	16.5	24.6	6.0
SA	10.7	48.2	—	22.5	15.8	—	31.4	6.5
WA	5.5	0.1	5.1	14.1	—	0.9	11.5	0.7
Tas.	4.4	24.7	—	26.3	—	18.9	13.6	2.7
NT	2.1	0.4	16.6	10.7	—	—	14.4	0.4
ACT	—	—	—	22.4	—	—	—	1.7
Aust.	3.4	1.0	0.8	6.7	4.9	4.1	11.5	1.8

— nil or rounded to zero (including null cells)

EXPLANATORY NOTES

INTRODUCTION

1 This publication contains estimates of engineering construction activity in Australia by both public and private sector organisations. The estimates were compiled from the Engineering Construction Survey (ECS).

2 These estimates together with results from the Australian Bureau of Statistics (ABS) Building Activity Survey provide a complete quarterly picture of building and construction activity in Australia.

SCOPE AND COVERAGE

3 The ECS aims to measure the value of all engineering construction work undertaken in Australia. This value excludes the cost of land and repair and maintenance activity, as well as the value of any transfers of existing assets, the value of installed machinery and equipment not integral to the structure and the expenses for relocation of utility services. However, a contract for the installation of machinery and equipment which is an integral part of a construction project is included.

4 Where projects include elements of both building and engineering construction (for example, electricity generation, heavy industrial plant) every effort is taken to exclude the building component from these statistics.

5 From the September quarter 2002, engineering construction activity in the External Territories of Australia is included in these statistics. Jervis Bay is included in New South Wales, while Christmas Island and Cocos (Keeling) Islands are included in Western Australia.

STATISTICAL UNIT

6 In the Engineering Construction Survey, the statistical unit used to represent businesses, and for which statistics are reported, is the Australian Business Number (ABN) unit, in most cases. The ABN unit is the business unit which has registered for an ABN, and thus appears on the Australian Taxation Office (ATO) administered Australian Business Register. This unit is suitable for ABS statistical needs when the business is simple in structure. For more significant and diverse businesses where the ABN unit is not suitable for ABS statistical needs, the statistical unit used is the Type of Activity Unit (TAU). A TAU is comprised of one or more business entities, sub-entities or branches of a business entity within an Enterprise Group that can report production and employment data for similar economic activities. When a minimum set of data items is available, a TAU is created which covers all the operations within an industry subdivision (and the TAU is classified to the relevant subdivision of the *Australian and New Zealand Standard Industrial Classification (ANZSIC)*). Where a business cannot supply adequate data for each industry, a TAU is formed which contains activity in more than one industry subdivision and the TAU is classified to the predominant ANZSIC subdivision.

7 Further details about the ABS economic statistical units used in this survey, and in other ABS economic surveys (both sample surveys and censuses), can be found in Chapter 2 of the *Standard Economic Sector Classifications of Australia (SESCA) 2002* (cat. no. 1218.0).

RELATIONSHIP WITH NATIONAL ACCOUNTS

8 Data on the value of work done on the construction of new residential buildings, alterations and additions to residential buildings, private sector non-residential buildings (from *Building Activity, Australia* (cat. no. 8752.0)) and the value of engineering construction activity (from the Engineering Construction Survey) are the major source data which are used to compile the national accounts estimates for private gross fixed capital formation on dwellings, and other buildings and structures. However, there are some adjustments to the survey data which are made in the process of compiling these national account series. Allowances are made for the value of building activity which is out of scope of the Building Activity Survey and the Engineering Construction Survey. Such activity includes work done on projects which fall below the size cut-offs used for the Building Activity Survey and also the value of work done which is undertaken

EXPLANATORY NOTES *continued*

- RELATIONSHIP WITH NATIONAL ACCOUNTS *continued*
- without obtaining a building permit, either because such a permit is not required or because the requisite permit is not obtained. The national accounts estimates also make allowances for purchases (less sales) of buildings and other structures from (to) the public sector.
- SAMPLE REVISION
- 9** The survey frames and samples are revised each quarter to ensure that they remain representative of the survey population. The timing for creating each quarter's survey frame is consistent with that of other ABS surveys. This provides for greater consistency when comparing data across surveys.
- CLASSIFICATION
- 10** *Ownership*. Projects are classified as *private sector* or *public sector* according to the expected ownership of the project at the time of completion.
- 11** *Sector*. The *public sector* includes Commonwealth Departments and Authorities, State Departments and Authorities, Local Government Authorities, Water, Sewerage and Electricity Authorities and government owned businesses and Statutory Authorities. All remaining organisations are classified as *private sector*. This publication contains separate estimates for the private sector and:
- Commonwealth Government
 - State and Territory Government
 - Local Government.
- 12** *Type of construction*. A project is classified to a category of construction without regard to end use. For example, a project involving coal handling equipment at an electricity generating plant is included under 'Heavy industry - Oil, gas, coal and other minerals' and not under 'Electricity generation, transmission and distribution'. Where a project involves more than one category of construction the project is included under the category which accounts for the major part of the contract in terms of value.
- RELIABILITY OF THE ESTIMATES
- 13** Since the estimates for private sector and public sector organisations are based on a sample of organisations they are subject to sampling error; that is, they may differ from the figures that would have been obtained if information for all organisations for the relevant period had been included in the survey. A measure of the likely difference is given by the relative standard error (RSE) of each estimate. There are about 2 chances in 3 that a sample estimate will differ by less than one standard error from the figure that would have been obtained if all units had been included, and about 19 chances in 20 that the difference will be less than 2 standard errors. Approximate RSEs of the estimates are shown in tables 24 and 25.
- 14** An example of the use of RSEs is as follows. If the total value of work done during the quarter is \$2,500m and the associated RSE is 0.5% then there are about 2 chances in 3 that the value which would have been obtained if there had been a complete collection would have been within the range \$2,488m to \$2,513m and about 19 chances in 20 that the value would have been within the range \$2,475m to \$2,525m.
- 15** Estimates that have an estimated relative standard error between 10% and 25% are annotated with the symbol '^'. These estimates should be used with caution as they are subject to sampling variability too high for some purposes. Estimates with an RSE between 25% and 50% are annotated with the symbol '*', indicating that the estimate should be used with caution as it is subject to sampling variability too high for most practical purposes. Estimates with an RSE greater than 50% are annotated with the symbol '**' indicating that the sampling variability causes the estimates to be considered too unreliable for general use.
- 16** The imprecision due to sampling variability, which is measured by the RSE, should not be confused with inaccuracies that may occur because of inadequacies in the source of information, imperfections in reporting by respondents, and errors made in the coding and processing of data. Inaccuracies of this kind are referred to as non-sampling

EXPLANATORY NOTES *continued*

RELIABILITY OF THE ESTIMATES *continued*

error, and may occur in any enumeration whether it be a full count or only a sample. Every effort is made to reduce the non-sampling error to a minimum by the careful design of questionnaires, efforts to obtain responses for all selected organisations, and efficient operating procedures.

17 Caution is advised in respect of the value of work commenced (and consequently, the value of work yet to be done) reported by the public sector. It is known that data reported for value of work commenced are a combination of the following: annual works budget estimates which are reported as commencements in the September quarter (and in some cases may subsequently be undertaken by the private sector); genuine commencements as defined in the Glossary, and reported quarterly; commencements being reported as equal to the value of work done for the quarter; commencements of major stages in the case of long-term projects.

SEASONAL ADJUSTMENT

18 Since seasonally adjusted statistics reflect both irregular and trend movements, an upward or downward movement in a seasonally adjusted series does not necessarily indicate a change of trend. Particular care should therefore be taken in interpreting individual quarter to quarter movements.

19 From the June quarter 2003, the seasonally adjusted estimates are produced by the concurrent seasonal adjustment method which takes account of the latest available original estimates. The concurrent seasonal adjustment methodology replaces the forward factor methodology previously used, when seasonal factors were only revised following annual re-analysis. The concurrent method improves the estimation of seasonal factors and, therefore, the seasonally adjusted and trend estimates for the current and previous quarters. As a result of this improvement, revisions to the seasonally adjusted and trend estimates will be observed for recent periods. In most instances, the only noticeable revisions will be to the previous quarter and the same quarter of a year earlier.

20 A more detailed review of concurrent seasonal factors will be conducted annually, generally prior to the release of data for the December quarter.

TREND ESTIMATES

21 Seasonally adjusted series can be smoothed to reduce the impact of the irregular component in the adjusted series. This smoothed seasonally adjusted series is called a trend estimate.

22 The trend estimates are derived by applying a 7-term Henderson moving average to the seasonally adjusted series. The 7-term Henderson average (like all Henderson averages) is symmetric but, as the end of a time series is approached, asymmetric forms of the average are applied. Unlike weights of the standard 7-term Henderson moving average, the weights employed here have been tailored to suit the particular characteristics of individual series.

23 While the smoothing technique described in paragraphs 19 and 20 enables trend estimates to be produced for recent quarters, it does result in revisions to the estimates for the most recent three quarters as additional observations become available. There may also be revisions because of changes in the original data and as a result of the re-estimation of the seasonal factors. For further information, see *Information Paper: A Guide to Interpreting Time Series—Monitoring Trends, 2003* (cat. no. 1349.0) or contact the Assistant Director, Time Series Analysis on Canberra (02) 6252 6540.

CHAIN VOLUME MEASURES

24 Chain volume estimates of the value of work done are presented in original, seasonally adjusted and trend terms in tables 1, 2, 3 and 4.

EXPLANATORY NOTES *continued*

CHAIN VOLUME MEASURES

continued

25 While current price estimates of value of work done reflect both price and volume changes, chain volume estimates measure changes in value after the direct effects of price changes have been eliminated and therefore only reflect volume changes. The direct impact of the Goods and Service Tax is a price change, and hence is removed from chain volume estimates. The deflators used to revalue the current price estimates in this publication are derived from the same price data underlying the deflators compiled for the dwellings and new other building components, and the new engineering construction component, of the national accounts aggregate 'Gross fixed capital formation'.

26 The chain volume measures of work done appearing in this publication are annually reweighted chain Laspeyres indexes referenced to current price values in a chosen reference year (currently 2002–03). The reference year is updated annually in the June quarter publication. Each year's data in the value of work done series are based on the prices of the previous year, except for the quarters of the latest incomplete year which are based upon the current reference year (i.e. 2002–03). Comparability with previous years is achieved by linking (or chaining) the series together to form a continuous time series. Further information on the nature and concepts of chain volume measures is contained in the ABS *Information Paper: Introduction of Chain Volume Measures in the Australian National Accounts* (cat. no. 5248.0).

27 The factors used to seasonally adjust the chain volume measures are identical to those used to adjust the corresponding current price series.

ACKNOWLEDGMENT

28 ABS publications draw extensively on information provided freely by individuals, businesses, governments and other organisations. Their continued cooperation is very much appreciated: without it, the wide range of statistics published by the ABS would not be available. Information received by the ABS is treated in strict confidence as required by the *Census and Statistics Act 1905*.

RELATED PRODUCTS

29 Users may also wish to refer to the following publications:

Building Activity, Australia cat. no. 8752.0

Building Approvals, Australia cat. no. 8731.0

Construction Work Done, Australia, Preliminary cat. no. 8755.0

Dwelling Unit Commencements, Australia, Preliminary cat. no. 8750.0.

30 Current publications and other products released by the ABS are listed in the *Catalogue of Publications and Products* (cat. no. 1101.0). The Catalogue is available from the National Information and Referral Service on 1300 135 070 or the ABS web site <<http://www.abs.gov.au>>. The ABS also issues a daily Release Advice on the web site which details products to be released in the week ahead.

ABS DATA AVAILABLE ON REQUEST

31 As well as the statistics included in this and related publications, the ABS may have other relevant data available on request. Inquiries should be made to the National Information and Referral Service on 1300 135 070.

APPENDIX LIST OF ELECTRONIC TABLES

ELECTRONIC TABLES

The following tables are available electronically via the ABS web site
<<http://www.abs.gov.au>> and AusStats.

ENGINEERING CONSTRUCTION ACTIVITY

- 1 Value of work done, chain volume measures
- 2 Value of work done, chain volume measures, change from previous period
- 3 Value of work done, states and territories, chain volume measures
- 4 Value of work done, states and territories, chain volume measures, change from previous period
- 5 Value of work done
- 6 Value of work done, change from previous period
- 7 Value of work done, states and territories
- 8 Value of work done, states and territories, change from previous period
- 9 Activity, states and territories
- 10 Activity, states and territories, change from previous period
- 11 Activity, by type, Australia, original
- 12 Work commenced by the private sector, by type, original
- 13 Work done by the private sector, by type, original
- 14 Work yet to be done by the private sector, by type, original
- 15 Activity by the public sector, by type, original
- 16 Activity for the public sector, by type, original
- 17a Value of work commenced, by type and sector, New South Wales, original
- 17b Value of work done, by type and sector, New South Wales, original
- 17c Value of work yet to be done, by type and sector, New South Wales, original
- 18a Value of work commenced, by type and sector, Victoria, original
- 18b Value of work done, by type and sector, Victoria, original
- 18c Value of work yet to be done, by type and sector, Victoria, original
- 19a Value of work commenced, by type and sector, Queensland, original
- 19b Value of work done, by type and sector, Queensland, original
- 19c Value of work yet to be done, by type and sector, Queensland, original
- 20a Value of work commenced, by type and sector, South Australia, original
- 20b Value of work done, by type and sector, South Australia, original
- 20c Value of work yet to be done, by type and sector, South Australia, original
- 21a Value of work commenced, by type and sector, Western Australia, original
- 21b Value of work done, by type and sector, Western Australia, original
- 21c Value of work yet to be done, by type and sector, Western Australia, original
- 22a Value of work commenced, by type and sector, Tasmania, original
- 22b Value of work done, by type and sector, Tasmania, original
- 22c Value of work yet to be done, by type and sector, Tasmania, original
- 23a Value of work commenced, by type and sector, Northern Territory, original
- 23b Value of work done, by type and sector, Northern Territory, original
- 23c Value of work yet to be done, by type and sector, Northern Territory, original
- 24a Value of work commenced, by type and sector, Australian Capital Territory, original
- 24b Value of work done, by type and sector, Australian Capital Territory, original
- 24c Value of work yet to be done, by type and sector, Australian Capital Territory, original
- 25 Value of work done by the private sector, states and territories, original
- 26 Value of work done by the public sector, states and territories, original
- 27 Value of work done for the public sector, states and territories, original

GLOSSARY

Bridges	Includes those for the support of roads, railways, causeways and elevated highways.
Electricity generation, transmission and distribution	Includes power stations; substations; hydro-electric generating plants; associated work i.e. towers; chimneys; transmission and distribution lines.
Harbours	Includes boat and yacht basins; breakwaters; retaining walls; docks and piers; terminals; wharves; dredging works; marinas.
Heavy industry	This category is the total of 'Oil, gas, coal and other minerals' and 'Other heavy industry'.
Oil, gas, coal and other minerals	Includes construction of production, storage and distribution facilities; refineries; pumping stations; construction of mines.
Other heavy industry	Includes construction of chemical plants; blast furnaces; steel mills; other industrial processing plants; ovens.
Pipelines	Includes oil and gas pipelines; urban supply mains for gas; pipelines for refined petroleum products, chemicals, foodstuffs, etc.
Railways	Includes tracklaying; overhead power lines and signals; platforms; tramways; tunnels for underground railways; fuel hoppers.
Recreation	Includes golf courses; playing fields; racecourses; stadiums; swimming pools; landscaping; park construction.
Roads, highways and subdivisions	Includes parking areas; cycle paths; airport runways; pedestrian and vehicle overpasses; traffic lights; roundabouts; associated road drainage works; street and highway lighting; road resurfacing, kerbing and guttering, road tunnels.
Sewerage and drainage	Includes sanitary and storm sewers; sewage treatment plants; stormwater drains; drainage systems.
Telecommunications	Includes mobile phone, radio, television, microwave and radar transmission towers; telephone lines and underground cables; coaxial cables.
Value of work commenced	<p>A project is regarded as having commenced when the site works begin, with the following exceptions:</p> <ul style="list-style-type: none">■ Some public sector authorities are unable to report on this basis. In such cases, the authorities report the value of their annual works budget in September quarter each year.■ For very large projects, where a significant amount of work is done off-site, the project may be commenced before the site works begin.
Value of work done	The value of work done for the private sector consists of the value of work done on prime contracts, plus speculative contracts, plus work done on own account. The value of work done for the public sector is the work done by the organisation's own workforce and subcontractors.
Value of work yet to be done	The value of outstanding work for the project at the end of the period. Rise and fall and other cost variations can lead to increases or decreases in the value of work yet to be done.
Water storage and supply	Includes dams; weirs; reservoirs; embankments for water diversion; water pipelines; mains and treatment plants; flood prevention and erosion; aqueducts; water conduits; systems conveying water to residences, commercial and industrial establishments.

FOR MORE INFORMATION . . .

- INTERNET* **www.abs.gov.au** the ABS web site is the best place to start for access to summary data from our latest publications, information about the ABS, advice about upcoming releases, our catalogue, and Australia Now—a statistical profile.
- LIBRARY* A range of ABS publications is available from public and tertiary libraries Australia-wide. Contact your nearest library to determine whether it has the ABS statistics you require, or visit our web site for a list of libraries.
- CPI INFOLINE* For current and historical Consumer Price Index data, call 1902 981 074 (call cost 77c per minute).
- DIAL-A-STATISTIC* This service now provides only current Consumer Price Index statistics call 1900 986 400 (call cost 77c per minute).

INFORMATION SERVICE

Data already published that can be provided within five minutes will be free of charge. Our information consultants can also help you to access the full range of ABS information—ABS user pays services can be tailored to your needs, time frame and budget. Publications may be purchased. Specialists are on hand to help you with analytical or methodological advice.

- PHONE* 1300 135 070
- EMAIL* client.services@abs.gov.au
- FAX* 1300 135 211
- POST* Client Services, ABS, GPO Box 796, Sydney NSW 2001

WHY NOT SUBSCRIBE?

ABS subscription services provide regular, convenient and prompt deliveries of selected ABS publications and products as they are released. Email delivery of monthly and quarterly publications is available.

- PHONE* 1300 366 323
- EMAIL* subscriptions@abs.gov.au
- FAX* (03) 9615 7848
- POST* Subscription Services, ABS, GPO Box 2796Y, Melbourne Vic 3001



2876200012048

ISSN 1037 3993

RRP \$25.00